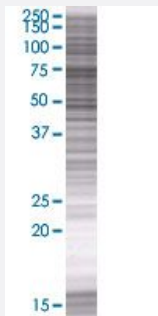


ZBED5 293T Cell Transient Overexpression Lysate(Denatured)

Catalog # H00058486-T01

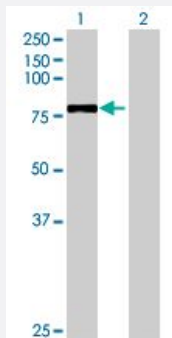
Size 100 uL

Applications



SDS-PAGE Gel

ZBED5 transfected lysate.



Western Blot

Lane 1: ZBED5 transfected lysate (78.9 KDa)

Lane 2: Non-transfected lysate.

Specification

Transfected Cell Line	293T
Plasmid	pCMV-ZBED5 full-length
Host	Human
Theoretical MW (kDa)	78.9
Interspecies Antigen Sequence	Mouse (35); Rat (38)

Quality Control Testing

Transient overexpression cell lysate was tested with Anti-ZBED5 antibody ([H00058486-B01](#)) by Western Blots.
SDS-PAGE Gel
ZBED5 transfected lysate.
Western Blot
Lane 1: ZBED5 transfected lysate (78.9 KDa)
Lane 2: Non-transfected lysate.

Storage Buffer

1X Sample Buffer (50 mM Tris-HCl, 2% SDS, 10% glycerol, 300 mM 2-mercaptoethanol, 0.01% Bromophenol blue)

Storage Instruction

Store at -80°C. Aliquot to avoid repeated freezing and thawing.

Applications

- Western Blot

Gene Info — ZBED5

Entrez GeneID

[58486](#)

GeneBank Accession#

[BC038508](#)

Protein Accession#

[AAH38508](#)

Gene Name

ZBED5

Gene Alias

FLJ41239

Gene Description

zinc finger, BED-type containing 5

Gene Ontology

[Hyperlink](#)

Gene Summary

This gene is unusual in that its coding sequence is mostly derived from Charlie-like DNA transposon; however, it does not appear to be an active DNA transposon as it is not flanked by terminal inverted repeats. The encoded protein is conserved among the mammalian Laurasiatheria branch. Multiple alternatively spliced variants, encoding the same protein, have been identified. [provided by RefSeq]

Other Designations

transposon-derived Buster1 transposase-like

Disease

- [Tobacco Use Disorder](#)