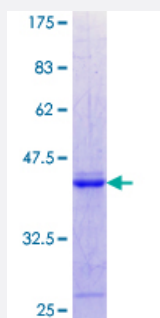


WFDC1 (Human) Recombinant Protein (Q01)

Catalog # H00058189-Q01

Size 25 ug, 10 ug

Applications



Specification

Product Description	Human WFDC1 partial ORF (NP_067020.2, 121 a.a. - 220 a.a.) recombinant protein with GST-tag at N-terminal.
Sequence	KPRWLGGNGWLLDGPPEVLQAEACSTTEDGAPELLCPSGYECHILSPGDVAEGIPNRGQCVKQ RRQADGRILRHKLYKEYPEGDSKNVAEPGRGQQKHQ
Host	Wheat Germ (in vitro)
Theoretical MW (kDa)	36.74
Interspecies Antigen Sequence	Mouse (82); Rat (81)
Preparation Method	in vitro wheat germ expression system
Purification	Glutathione Sepharose 4 Fast Flow
Quality Control Testing	12.5% SDS-PAGE Stained with Coomassie Blue.
Storage Buffer	50 mM Tris-HCl, 10 mM reduced Glutathione, pH=8.0 in the elution buffer.
Storage Instruction	Store at -80°C. Aliquot to avoid repeated freezing and thawing.
Note	Best use within three months from the date of receipt of this protein.

Applications

- Enzyme-linked Immunoabsorbent Assay
- Western Blot (Recombinant protein)
- Antibody Production
- Protein Array

Gene Info — WFDC1

Entrez GeneID [58189](#)

GeneBank Accession# [NM_021197](#)

Protein Accession# [NP_067020.2](#)

Gene Name WFDC1

Gene Alias PS20

Gene Description WAP four-disulfide core domain 1

Omim ID [605322](#)

Gene Ontology [Hyperlink](#)

Gene Summary This gene encodes a member of the WAP-type four disulfide core domain family. The WAP-type four-disulfide core domain, or WAP signature motif, contains eight cysteines forming four disulfide bonds at the core of the protein, and functions as a protease inhibitor in many family members. The encoded protein shares 81% amino acid identity with the rat ps20 protein, which was originally identified as a secreted growth inhibitor. This gene is mapped to chromosome 16q24, an area of frequent loss of heterozygosity in cancers, including prostate, breast and hepatocellular cancers and Wilms' tumor. Owing to its location and a possible growth inhibitory property of its gene product, this gene is suggested to be a tumor suppressor gene. [provided by RefSeq]

Other Designations WAP four-disulfide core domain 1 homolog|prostate stromal protein ps20

Disease

- [Arthritis](#)
- [Genetic Predisposition to Disease](#)