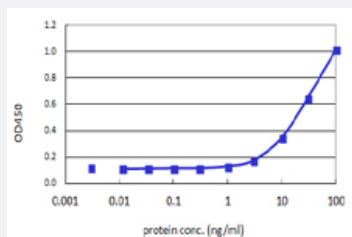


NGB (Human) Matched Antibody Pair

Catalog # H00058157-AP41 Size 1 Set

Applications



Sandwich ELISA detection sensitivity ranging from 0.3 ng/ml to 100 ng/ml.

Specification

Product Description	This antibody pair set comes with a matched antibody pair to detect and quantify the protein level of human NGB.
Reactivity	Human
Quality Control Testing	Standard curve using recombinant protein (H00058157-P01) as an analyte. Sandwich ELISA detection sensitivity ranging from 0.3 ng/ml to 100 ng/ml.
Supplied Product	Antibody pair set content: 1. Capture antibody: mouse monoclonal anti-NGB, IgG1 Kappa (100 ug) 2. Detection antibody: biotinylated mouse monoclonal anti-NGB, IgG1 Kappa (50 ug) *Reagents are sufficient for at least 3-5 x 96 well plates using recommended protocols.
Storage Instruction	Store reagents of the antibody pair set at -20°C or lower. Please aliquot to avoid repeated freeze thaw cycle. Reagents should be returned to -20°C storage immediately after use.

Applications

- ELISA Pair (Recombinant protein)

[Protocol Download](#)

Gene Info — NGB

Entrez GeneID	58157
---------------	-----------------------

Gene Name	NGB
-----------	-----

Gene Alias	-
------------	---

Gene Description	neuroglobin
------------------	-------------

Omim ID	605304
---------	------------------------

Gene Ontology	Hyperlink
---------------	---------------------------

Gene Summary	This gene encodes an oxygen-binding protein that is distantly related to members of the globin gene family. It is highly conserved among other vertebrates. It is expressed in the central and peripheral nervous system where it may be involved in increasing oxygen availability and providing protection under hypoxic/ischemic conditions. [provided by RefSeq]
--------------	--

Other Designations	-
--------------------	---

Disease

- [Atherosclerosis](#)
- [Brain Injuries](#)
- [Brain Ischemia](#)
- [Stroke](#)