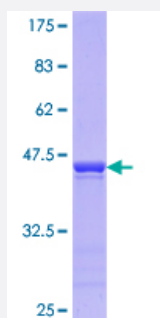


# PTBP2 (Human) Recombinant Protein (Q01)

Catalog # H00058155-Q01

Size 25 ug, 10 ug

## Applications



## Specification

<b>Product Description</b>	Human PTBP2 partial ORF ( AAH16582.1, 35 a.a. - 175 a.a.) recombinant protein with GST-tag at N-terminal.
<b>Sequence</b>	MVVTANGNDSKKFKGEDKMDGAPSRVLHIRKLPGEVTETEVIALGLPFGKVTNMLKKGKNQAFL ELATEEAAITMVNYSAVTPHLRNQPIYQYSNHKELKTDNTLNQRAQAVLQAVTAVQTANTPLSGT TVSESAVTP
<b>Host</b>	Wheat Germ (in vitro)
<b>Theoretical MW (kDa)</b>	41.25
<b>Interspecies Antigen Sequence</b>	Mouse (99); Rat (99)
<b>Preparation Method</b>	<a href="#">in vitro wheat germ expression system</a>
<b>Purification</b>	Glutathione Sepharose 4 Fast Flow
<b>Quality Control Testing</b>	12.5% SDS-PAGE Stained with Coomassie Blue.
<b>Storage Buffer</b>	50 mM Tris-HCl, 10 mM reduced Glutathione, pH=8.0 in the elution buffer.
<b>Storage Instruction</b>	Store at -80°C. Aliquot to avoid repeated freezing and thawing.
<b>Note</b>	Best use within three months from the date of receipt of this protein.

## Applications

- Enzyme-linked Immunoabsorbent Assay
- Western Blot (Recombinant protein)
- Antibody Production
- Protein Array

## Gene Info — PTBP2

Entrez GeneID [58155](#)

GeneBank Accession# [BC016582](#)

Protein Accession# [AAH16582.1](#)

Gene Name PTBP2

Gene Alias FLJ34897, PTB, PTBLP, brPTB, nPTB, nPTB5, nPTB6, nPTB7, nPTB8

Gene Description polypyrimidine tract binding protein 2

Omim ID [608449](#)

Gene Ontology [Hyperlink](#)

**Gene Summary** The protein encoded by this gene binds to the intronic cluster of RNA regulatory elements, downstream control sequence (DCS). It is implicated in controlling the assembly of other splicing-regulatory proteins. This protein is very similar to the polypyrimidine tract binding protein but it is expressed primarily in the brain. [provided by RefSeq]

**Other Designations** OTTHUMP00000012411|PTB-like|neural polypyrimidine tract binding protein|splicing regulator

## Disease

- [Tobacco Use Disorder](#)