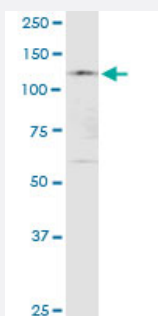


KIAA1967 (Human) IP-WB Antibody Pair

Catalog # H00057805-PW1

Size 1 Set

Applications



Immunoprecipitation of KIAA1967 transfected lysate using rabbit polyclonal anti-KIAA1967 and Protein A Magnetic Bead ([U0007](#)), and immunoblotted with mouse purified polyclonal anti-KIAA1967.

Specification

Product Description	This IP-WB antibody pair set comes with one antibody for immunoprecipitation and another to detect the precipitated protein in western blot.
Reactivity	Human
Interspecies Antigen Sequence	Mouse (91); Rat (91)
Quality Control Testing	Immunoprecipitation-Western Blot (IP-WB) Immunoprecipitation of KIAA1967 transfected lysate using rabbit polyclonal anti-KIAA1967 and Protein A Magnetic Bead (U0007), and immunoblotted with mouse purified polyclonal anti-KIAA1967.
Supplied Product	Antibody pair set content: 1. Antibody pair for IP: rabbit polyclonal anti-KIAA1967 (300 ul) 2. Antibody pair for WB: mouse purified polyclonal anti-KIAA1967 (50 ug)
Storage Instruction	Store reagents of the antibody pair set at -20°C or lower. Please aliquot to avoid repeated freeze thaw cycle. Reagents should be returned to -20°C storage immediately after use.

Applications

- Immunoprecipitation-Western Blot

[Protocol Download](#)

Gene Info — KIAA1967

Entrez GeneID	57805
---------------	-----------------------

Gene Name	KIAA1967
-----------	----------

Gene Alias	DBC-1, DBC1
------------	-------------

Gene Description	KIAA1967
------------------	----------

Omim ID	607359
---------	------------------------

Gene Ontology	Hyperlink
---------------	---------------------------

Other Designations	deleted in breast cancer 1p30 DBC protein
--------------------	---