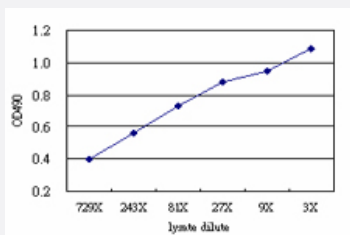


KIAA1967 (Human) Matched Antibody Pair

Catalog # H00057805-AP51

Size 1 Set

Applications



Sandwich ELISA detection sensitivity ranging from approximately 729x to 3x dilution of the KIAA1967 293T overexpression lysate (non-denatured).

Specification

Product Description

This antibody pair set comes with a matched antibody pair to detect and quantify the protein level of human KIAA1967.

Reactivity

Human

Interspecies Antigen Sequence

Mouse (91); Rat (91)

Quality Control Testing

Standard curve using KIAA1967 293T overexpression lysate (non-denatured) as an analyte. Sandwich ELISA detection sensitivity ranging from approximately 729x to 3x dilution of the KIAA1967 293T overexpression lysate (non-denatured).

Supplied Product

Antibody pair set content:
 1. Capture antibody: mouse monoclonal anti-KIAA1967 (100 ug)
 2. Detection antibody: rabbit purified polyclonal anti-KIAA1967 (50 ug)
 *Reagents are sufficient for at least 3-5 x 96 well plates using recommended protocols.

Storage Instruction

Store reagents of the antibody pair set at -20°C or lower. Please aliquot to avoid repeated freeze thaw cycle. Reagents should be returned to -20°C storage immediately after use.

Applications

- ELISA Pair (Transfected lysate)

[Protocol Download](#)

Gene Info — KIAA1967

Entrez GeneID	57805
---------------	-----------------------

Gene Name	KIAA1967
-----------	----------

Gene Alias	DBC-1, DBC1
------------	-------------

Gene Description	KIAA1967
------------------	----------

Omim ID	607359
---------	------------------------

Gene Ontology	Hyperlink
---------------	---------------------------

Other Designations	deleted in breast cancer 1 p30 DBC protein
--------------------	--