

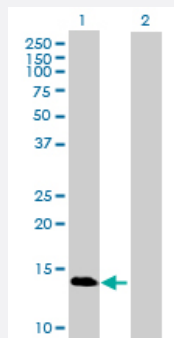
MaxPab®

GBA3 purified MaxPab mouse polyclonal antibody (B01P)

Catalog # H00057733-B01P

Size 50 ug

Applications



Western Blot (Transfected lysate)

Western Blot analysis of GBA3 expression in transfected 293T cell line ([H00057733-T01](#)) by GBA3 MaxPab polyclonal antibody.

Lane 1: GBA3 transfected lysate(17.82 KDa).

Lane 2: Non-transfected lysate.

Specification

Product Description	Mouse polyclonal antibody raised against a full-length human GBA3 protein.
Immunogen	GBA3 (AAH29362.1, 1 a.a. ~ 162 a.a) full-length human protein.
Sequence	MAFPAGFGWAAATAAYQVEGGWDADGKGPCVWDTFTHQGGERVFKNQTDVACGSYTLWEE DLKCIKQLGLTHYRFSLSWSRLLPDGTTGFINQKAIQLDKVNLQVYCAWSLLDNFEWNQGYSSRF GLFHVDFEDPARPRVPYSAKEYAKIIRNNGLEAHL
Host	Mouse
Reactivity	Human
Quality Control Testing	Antibody reactive against mammalian transfected lysate.
Storage Buffer	In 1x PBS, pH 7.4
Storage Instruction	Store at -20°C or lower. Aliquot to avoid repeated freezing and thawing.

Applications

- Western Blot (Transfected lysate)

Western Blot analysis of GBA3 expression in transfected 293T cell line ([H00057733-T01](#)) by GBA3 MaxPab polyclonal antibody.

Lane 1: GBA3 transfected lysate(17.82 KDa).

Lane 2: Non-transfected lysate.

[Protocol Download](#)

Gene Info — GBA3

Entrez GeneID [57733](#)

GeneBank Accession# [BC029362.1](#)

Protein Accession# [AAH29362.1](#)

Gene Name GBA3

Gene Alias CBGL1, GLUC, KLrP, MGC104276, MGC126878

Gene Description glucosidase, beta, acid 3 (cytosolic)

Omim ID [606619](#)

Gene Ontology [Hyperlink](#)

Gene Summary GBA3, or cytosolic beta-glucosidase (EC 3.2.1.21), is a predominantly liver enzyme that efficiently hydrolyzes beta-D-glucoside and beta-D-galactoside, but not any known physiologic beta-glycoside, suggesting that it may be involved in detoxification of plant glycosides (de Graaf et al., 2001 [PubMed 11389701]). GBA3 also has significant neutral glycosylceramidase activity (EC 3.2.1.62), suggesting that it may be involved in a nonlysosomal catabolic pathway of glucosylceramide metabolism (Hayashi et al., 2007 [PubMed 17595169]).[supplied by OMIM]

Other Designations cytosolic beta-glucosidase|klotho-related protein

Pathway

- [Cyanoamino acid metabolism](#)
- [Phenylpropanoid biosynthesis](#)
- [Starch and sucrose metabolism](#)