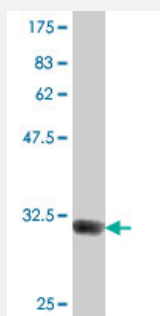


GBA3 polyclonal antibody (A01)

Catalog # H00057733-A01

Size 50 uL

Applications



Western Blot detection against Immunogen (33.48 KDa) .

Specification

Product Description	Mouse polyclonal antibody raised against a partial recombinant GBA3.
Immunogen	GBA3 (NP_066024, 402 a.a. ~ 468 a.a) partial recombinant protein with GST tag.
Sequence	KAIQLDKVNLQVYCAWSLLDNFEWNQGYSSRFGLFHVDFEDPARPRVPYTSKEYAKIIRNNGLEAH
Host	Mouse
Reactivity	Human
Quality Control Testing	Antibody Reactive Against Recombinant Protein. Western Blot detection against Immunogen (33.48 KDa) .
Storage Buffer	50 % glycerol
Storage Instruction	Store at -20°C or lower. Aliquot to avoid repeated freezing and thawing.

Applications

- Western Blot (Recombinant protein)

[Protocol Download](#)

- ELISA

Gene Info — GBA3

Entrez GeneID [57733](#)

GeneBank Accession# [NM_020973](#)

Protein Accession# [NP_066024](#)

Gene Name GBA3

Gene Alias CBGL1, GLUC, KLrP, MGC104276, MGC126878

Gene Description glucosidase, beta, acid 3 (cytosolic)

Omim ID [606619](#)

Gene Ontology [Hyperlink](#)

Gene Summary GBA3, or cytosolic beta-glucosidase (EC 3.2.1.21), is a predominantly liver enzyme that efficiently hydrolyzes beta-D-glucoside and beta-D-galactoside, but not any known physiologic beta-glycoside, suggesting that it may be involved in detoxification of plant glycosides (de Graaf et al., 2001 [PubMed 11389701]). GBA3 also has significant neutral glycosylceramidase activity (EC 3.2.1.62), suggesting that it may be involved in a nonlysosomal catabolic pathway of glucosylceramide metabolism (Hayashi et al., 2007 [PubMed 17595169]).[supplied by OMIM]

Other Designations cytosolic beta-glucosidase|klotho-related protein

Pathway

- [Cyanoamino acid metabolism](#)
- [Phenylpropanoid biosynthesis](#)
- [Starch and sucrose metabolism](#)