

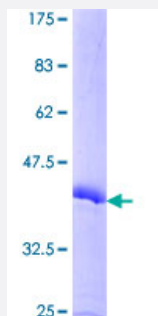
Full-Length

SEMA4G (Human) Recombinant Protein (P02)

Catalog # H00057715-P02

Size 25 ug, 10 ug

Applications



Specification

Product Description	Human SEMA4G full-length ORF (AAH20960.1, 1 a.a. - 127 a.a.) recombinant protein with GST-tag at N-terminal.
Sequence	MGSMSPPSAWPCVLDGPETRQDLCQPPKPCVHSHAHMEECLSAGLQCPHPHLLLVHSCFIPAS GLGVPSQLPHPWSSSPAPCGDLFVKSLGTGQPGEVRLHHSPPLPSCVALVNQPPHSPWSFSR V
Host	Wheat Germ (in vitro)
Theoretical MW (kDa)	39.9
Interspecies Antigen Sequence	Mouse (33); Rat (33)
Preparation Method	in vitro wheat germ expression system
Purification	Glutathione Sepharose 4 Fast Flow
Quality Control Testing	12.5% SDS-PAGE Stained with Coomassie Blue.
Storage Buffer	50 mM Tris-HCl, 10 mM reduced Glutathione, pH=8.0 in the elution buffer.
Storage Instruction	Store at -80°C. Aliquot to avoid repeated freezing and thawing.

Note

Best use within three months from the date of receipt of this protein.

Applications

- Enzyme-linked Immunoabsorbent Assay
- Western Blot (Recombinant protein)
- Antibody Production
- Protein Array

Gene Info — SEMA4G

Entrez GeneID	57715
GeneBank Accession#	BC020960.1
Protein Accession#	AAH20960.1
Gene Name	SEMA4G
Gene Alias	FLJ20590, KIAA1619, MGC102867
Gene Description	sema domain, immunoglobulin domain (Ig), transmembrane domain (TM) and short cytoplasmic domain, (semaphorin) 4G
Gene Ontology	Hyperlink
Gene Summary	<p>Semaphorins are a large family of conserved secreted and membrane associated proteins which possess a semaphorin (Sema) domain and a PSI domain (found in plexins, semaphorins and integrins) in the N-terminal extracellular portion. Based on sequence and structural similarities, semaphorins are put into eight classes: invertebrates contain classes 1 and 2, viruses have class V, and vertebrates contain classes 3-7. Semaphorins serve as axon guidance ligands via multimeric receptor complexes, some (if not all) containing plexin proteins. This gene encodes a class 4 semaphorin. This gene and the gene for mitochondrial ribosomal protein L43 overlap at map location 10q24.31 and are transcribed in opposite directions. [provided by RefSeq]</p>
Other Designations	OTTHUMP00000020312 semaphorin 4G

Pathway

- [Axon guidance](#)

Disease

- [Alzheimer Disease](#)
- [Carcinoma](#)
- [Genetic Predisposition to Disease](#)
- [Kidney Neoplasms](#)