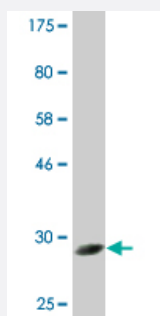


CPNE5 monoclonal antibody (M02A), clone 2G4

Catalog # H00057699-M02A

Size 200 uL

Applications



Western Blot detection against Immunogen (32.12 KDa) .

Specification

Product Description	Mouse monoclonal antibody raised against a partial recombinant CPNE5.
Immunogen	CPNE5 (NP_065990, 393 a.a. ~ 450 a.a) partial recombinant protein with GST tag. MW of the GST tag alone is 26 KDa.
Sequence	RVSHEFPLNGNQENPSCCGIDGILEAYHRSLRTVQLYGPTNFAPVVTHVARNAAAVQD
Host	Mouse
Reactivity	Human
Interspecies Antigen Sequence	Mouse (97); Rat (97)
Isotype	IgG1 Kappa
Quality Control Testing	Antibody Reactive Against Recombinant Protein. Western Blot detection against Immunogen (32.12 KDa) .
Storage Buffer	In ascites fluid
Storage Instruction	Store at -20°C or lower. Aliquot to avoid repeated freezing and thawing.

Applications

- Western Blot (Recombinant protein)

[Protocol Download](#)

- ELISA

Gene Info — CPNE5

Entrez GeneID [57699](#)

GeneBank Accession# [NM_020939](#)

Protein Accession# [NP_065990](#)

Gene Name CPNE5

Gene Alias COPN5, CPN5, DKFZp666C234, KIAA1599

Gene Description copine V

Omim ID [604209](#)

Gene Ontology [Hyperlink](#)

Gene Summary Calcium-dependent membrane-binding proteins may regulate molecular events at the interface of the cell membrane and cytoplasm. This gene is one of several genes that encode a calcium-dependent protein containing two N-terminal type II C2 domains and an integrin A domain-like sequence in the C-terminus. Sequence analysis identified multiple alternatively spliced transcript variants but their full-length natures could not be determined. [provided by RefSeq]

Other Designations OTTHUMP00000016296|OTTHUMP00000039675

Disease

- [Tobacco Use Disorder](#)