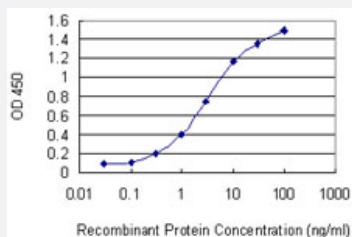


CPNE5 monoclonal antibody (M02), clone 2G4

Catalog # H00057699-M02

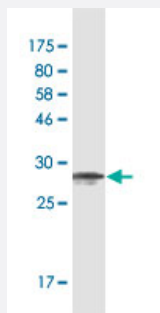
Size 50 ug

Applications



Sandwich ELISA (Recombinant protein)

Detection limit for recombinant GST tagged CPNE5 is 0.1 ng/ml as a capture antibody.



Western Blot detection against Immunogen (32.12 KDa) .

Specification

Product Description	Mouse monoclonal antibody raised against a partial recombinant CPNE5.
Immunogen	CPNE5 (NP_065990, 393 a.a. ~ 450 a.a) partial recombinant protein with GST tag. MW of the GST tag alone is 26 KDa.
Sequence	RVSHEFPLNGNQENPSCCGIDGILEAYHRSLRTVQLYGPTNFAPVVTHVARNAAAVQD
Host	Mouse
Reactivity	Human
Interspecies Antigen Sequence	Mouse (97); Rat (97)

Isotype	IgG1 Kappa
Quality Control Testing	Antibody Reactive Against Recombinant Protein. Western Blot detection against Immunogen (32.12 KDa) .
Storage Buffer	In 1x PBS, pH 7.4
Storage Instruction	Store at -20°C or lower. Aliquot to avoid repeated freezing and thawing.

Applications

- Western Blot (Recombinant protein)

[Protocol Download](#)

- Sandwich ELISA (Recombinant protein)

Detection limit for recombinant GST tagged CPNE5 is 0.1 ng/ml as a capture antibody.

[Protocol Download](#)

- ELISA

Gene Info — CPNE5

Entrez GeneID	57699
GeneBank Accession#	NM_020939
Protein Accession#	NP_065990
Gene Name	CPNE5
Gene Alias	COPN5, CPN5, DKFZp666C234, KIAA1599
Gene Description	copine V
Omim ID	604209
Gene Ontology	Hyperlink
Gene Summary	Calcium-dependent membrane-binding proteins may regulate molecular events at the interface of the cell membrane and cytoplasm. This gene is one of several genes that encode a calcium-dependent protein containing two N-terminal type II C2 domains and an integrin A domain-like sequence in the C-terminus. Sequence analysis identified multiple alternatively spliced transcript variants but their full-length natures could not be determined. [provided by RefSeq]

Other Designations

OTTHUMP00000016296|OTTHUMP00000039675

Disease

- [Tobacco Use Disorder](#)