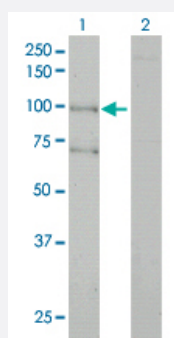


# ALS2 monoclonal antibody (M01), clone 4F9

Catalog # H00057679-M01

Size 100 ug

## Applications

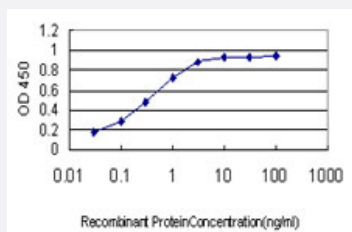


### Western Blot (Transfected lysate)

Western Blot analysis of ALS2 expression in transfected 293T cell line by ALS2 monoclonal antibody (M01), clone 4F9.

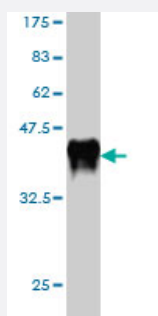
Lane 1: ALS2 transfected lysate (184 KDa).

Lane 2: Non-transfected lysate.



### Sandwich ELISA (Recombinant protein)

Detection limit for recombinant GST tagged ALS2 is approximately 0.03 ng/ml as a capture antibody.



Western Blot detection against Immunogen (36.74 KDa) .

## Specification

### Product Description

Mouse monoclonal antibody raised against a partial recombinant ALS2.

<b>Immunogen</b>	ALS2 (AAH29174, 221 a.a. ~ 320 a.a) partial recombinant protein with GST tag. MW of the GST tag alone is 26 KDa.
<b>Sequence</b>	PSQDLKPVPERCNQCSQLLITMTDKEDHVIISDSHCCPLGVTLTESQAENHASTALSPSTETLDRQ EEVFENTLVANDQSVATELNAVSAQITSSDAMSS
<b>Host</b>	Mouse
<b>Reactivity</b>	Human
<b>Interspecies Antigen Sequence</b>	Mouse (90); Rat (89)
<b>Isotype</b>	IgG1 Kappa
<b>Quality Control Testing</b>	Antibody Reactive Against Recombinant Protein. Western Blot detection against Immunogen (36.74 KDa) .
<b>Storage Buffer</b>	In 1x PBS, pH 7.4
<b>Storage Instruction</b>	Store at -20°C or lower. Aliquot to avoid repeated freezing and thawing.

## Applications

- Western Blot (Transfected lysate)

Western Blot analysis of ALS2 expression in transfected 293T cell line by ALS2 monoclonal antibody (M01), clone 4F9.

Lane 1: ALS2 transfected lysate(184 KDa).

Lane 2: Non-transfected lysate.

[Protocol Download](#)

- Western Blot (Recombinant protein)

[Protocol Download](#)

- Sandwich ELISA (Recombinant protein)

Detection limit for recombinant GST tagged ALS2 is approximately 0.03ng/ml as a capture antibody.

[Protocol Download](#)

- ELISA

## Gene Info — ALS2

Entrez GeneID	<a href="#">57679</a>
GeneBank Accession#	<a href="#">BC029174</a>
Protein Accession#	<a href="#">AAH29174</a>
Gene Name	ALS2
Gene Alias	ALS2CR6, ALSJ, FLJ31851, IAHSP, KIAA1563, MGC87187, PLSJ
Gene Description	amyotrophic lateral sclerosis 2 (juvenile)
Omim ID	<a href="#">205100</a> <a href="#">606352</a> <a href="#">606353</a> <a href="#">607225</a>
Gene Ontology	<a href="#">Hyperlink</a>
Gene Summary	The protein encoded by this gene contains an ATS1/RCC1-like domain, a RhoGEF domain, and a vacuolar protein sorting 9 (VPS9) domain, all of which are guanine-nucleotide exchange factors that activate members of the Ras superfamily of GTPases. The protein functions as a guanine nucleotide exchange factor for the small GTPase RAB5. The protein localizes with RAB5 on early endosomal compartments, and functions as a modulator for endosomal dynamics. Mutations in this gene result in several forms of juvenile lateral sclerosis and infantile-onset ascending spastic paralysis. Multiple transcript variants encoding different isoforms have been found for this gene. [provided by RefSeq]
Other Designations	alsin

## Pathway

- [Amyotrophic lateral sclerosis \(ALS\)](#)

## Disease

- [Amyotrophic lateral sclerosis](#)
- [Genetic Predisposition to Disease](#)
- [Multiple Sclerosis](#)
- [Tobacco Use Disorder](#)