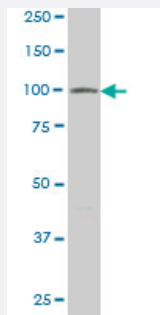


VPS18 monoclonal antibody (M02), clone 2G10

Catalog # H00057617-M02

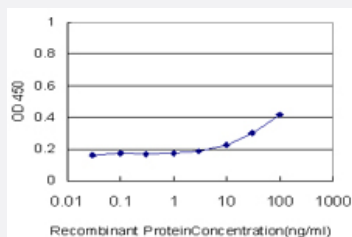
Size 100 ug

Applications



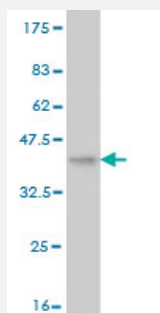
Western Blot (Cell lysate)

VPS18 monoclonal antibody (M02), clone 2G10. Western Blot analysis of VPS18 expression in Raw 264.7.



Sandwich ELISA (Recombinant protein)

Detection limit for recombinant GST tagged VPS18 is approximately 3ng/ml as a capture antibody.



Western Blot detection against Immunogen (36.52 KDa) .

Specification

Product Description

Mouse monoclonal antibody raised against a partial recombinant VPS18.

Immunogen	VPS18 (NP_065908, 3 a.a. ~ 100 a.a) partial recombinant protein with GST tag. MW of the GST tag alone is 26 KDa.
Sequence	SILDEYENSLRSRAVLQPGCPSVGIPHSGYVNAQLEKEVPIFTKQRIDFTPSEITSLVVSSNQLCM SLGKDTLLRIDLGKANEPNHVELGRKDDAKV
Host	Mouse
Reactivity	Human, Mouse
Interspecies Antigen Sequence	Mouse (89); Rat (89)
Isotype	IgG3 Kappa
Quality Control Testing	Antibody Reactive Against Recombinant Protein. Western Blot detection against Immunogen (36.52 KDa) .
Storage Buffer	In 1x PBS, pH 7.4
Storage Instruction	Store at -20°C or lower. Aliquot to avoid repeated freezing and thawing.

Applications

- Western Blot (Cell lysate)

VPS18 monoclonal antibody (M02), clone 2G10. Western Blot analysis of VPS18 expression in Raw 264.7.

[Protocol Download](#)

- Western Blot (Recombinant protein)

[Protocol Download](#)

- Sandwich ELISA (Recombinant protein)

Detection limit for recombinant GST tagged VPS18 is approximately 3ng/ml as a capture antibody.

[Protocol Download](#)

- ELISA

Gene Info — VPS18

Entrez GeneID [57617](#)

GeneBank Accession#	NM_020857
Protein Accession#	NP_065908
Gene Name	VPS18
Gene Alias	KIAA1475, PEP3
Gene Description	vacuolar protein sorting 18 homolog (S. cerevisiae)
Omim ID	608551
Gene Ontology	Hyperlink
Gene Summary	Vesicle mediated protein sorting plays an important role in segregation of intracellular molecules into distinct organelles. Genetic studies in yeast have identified more than 40 vacuolar protein sorting (VPS) genes involved in vesicle transport to vacuoles. This gene encodes the human homolog of yeast class C Vps18 protein. The mammalian class C Vps proteins are predominantly associated with late endosomes/lysosomes, and like their yeast counterparts, may mediate vesicle trafficking steps in the endosome/lysosome pathway. [provided by RefSeq]
Other Designations	vacuolar protein sorting 18 vacuolar protein sorting protein 18

Publication Reference

- [The cellular factors Vps18 and Mon2 are required for efficient production of infectious HIV-1 particles.](#)

Tomita Y, Noda T, Fujii K, Watanabe T, Morikawa Y, Kawaoka Y.

J Virol 2011 Mar; 85:5618.

Application: WB-Tr, Human, 293T cells