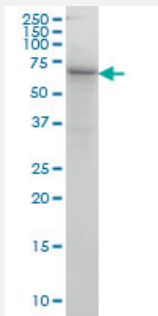


# COG6 monoclonal antibody (M01), clone 5B5

Catalog # H00057511-M01

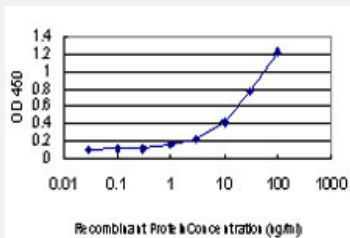
Size 100 ug

## Applications



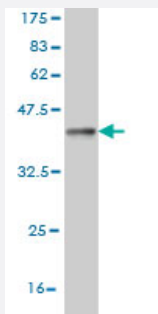
### Western Blot (Cell lysate)

COG6 monoclonal antibody (M01), clone 5B5 Western Blot analysis of COG6 expression in A-431 ( Cat # L015V1 ).



### Sandwich ELISA (Recombinant protein)

Detection limit for recombinant GST tagged COG6 is approximately 1ng/ml as a capture antibody.



Western Blot detection against Immunogen (36.74 kDa) .

## Specification

### Product Description

Mouse monoclonal antibody raised against a partial recombinant COG6.

<b>Immunogen</b>	COG6 (NP_065802, 558 a.a. ~ 657 a.a) partial recombinant protein with GST tag. MW of the GST tag alone is 26 KDa.
<b>Sequence</b>	QQHKPEQGSLANMPNLDVTLKAAMVQFDRYLSAPDNLLIPQLNFFLSATVKEQMKQSTELVCR AYGEVYAAVMNPINEYKDPENILHRSPQQVQTLLS
<b>Host</b>	Mouse
<b>Reactivity</b>	Human
<b>Interspecies Antigen Sequence</b>	Mouse (84); Rat (85)
<b>Isotype</b>	IgG1 Kappa
<b>Quality Control Testing</b>	Antibody Reactive Against Recombinant Protein. Western Blot detection against Immunogen (36.74 KDa) .
<b>Storage Buffer</b>	In 1x PBS, pH 7.4
<b>Storage Instruction</b>	Store at -20°C or lower. Aliquot to avoid repeated freezing and thawing.

## Applications

- Western Blot (Cell lysate)

COG6 monoclonal antibody (M01), clone 5B5 Western Blot analysis of COG6 expression in A-431 ( Cat # L015V1 ).

[Protocol Download](#)

- Western Blot (Recombinant protein)

[Protocol Download](#)

- Sandwich ELISA (Recombinant protein)

Detection limit for recombinant GST tagged COG6 is approximately 1ng/ml as a capture antibody.

[Protocol Download](#)

- ELISA

## Gene Info — COG6

Entrez GeneID [57511](#)

GeneBank Accession#	<a href="#">NM_020751</a>
Protein Accession#	<a href="#">NP_065802</a>
Gene Name	COG6
Gene Alias	COD2, DKFZp313D191, KIAA1134
Gene Description	component of oligomeric golgi complex 6
Omim ID	<a href="#">606977</a>
Gene Ontology	<a href="#">Hyperlink</a>
Gene Summary	This gene encodes a subunit of the conserved oligomeric Golgi complex that is required for maintaining normal structure and activity of the Golgi apparatus. The encoded protein is organized with conserved oligomeric Golgi complex components 5, 7 and 8 into a sub-complex referred to as lobe B. Alternative splicing results in multiple transcript variants
Other Designations	complexed with Dor1p 2 conserved oligomeric Golgi complex protein 6

## Publication Reference

- [A genome-wide association study of psoriasis and psoriatic arthritis identifies new disease Loci.](#)

Liu Y, Helms C, Liao W, Zaba LC, Duan S, Gardner J, Wise C, Miner A, Malloy MJ, Pullinger CR, Kane JP, Saccone S, Worthington J, Bruce I, Kwok PY, Menter A, Krueger J, Barton A, Saccone NL, Bowcock AM.

PLoS Genetics 2008 Mar; 4(3):e1000041.

Application: IHC, Human, Non-lesional and lesional skin tissues from patients with Psoriasis and Psoriatic Arthritis