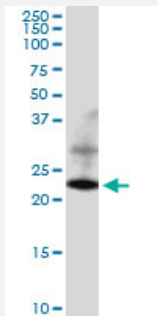


# RAB22A (Human) IP-WB Antibody Pair

Catalog # H00057403-PW1

Size 1 Set

## Applications



Immunoprecipitation of RAB22A transfected lysate using rabbit polyclonal anti-RAB22A and Protein A Magnetic Bead ([U0007](#)), and immunoblotted with mouse polyclonal anti-RAB22A.

## Specification

<b>Product Description</b>	This IP-WB antibody pair set comes with one antibody for immunoprecipitation and another to detect the precipitated protein in western blot.
<b>Reactivity</b>	Human
<b>Interspecies Antigen Sequence</b>	Mouse (97); Rat (84)
<b>Quality Control Testing</b>	Immunoprecipitation-Western Blot (IP-WB) Immunoprecipitation of RAB22A transfected lysate using rabbit polyclonal anti-RAB22A and Protein A Magnetic Bead ( <a href="#">U0007</a> ), and immunoblotted with mouse polyclonal anti-RAB22A.
<b>Supplied Product</b>	Antibody pair set content: 1. Antibody pair for IP: rabbit polyclonal anti-RAB22A (300 ul) 2. Antibody pair for WB: mouse polyclonal anti-RAB22A (50 ul)
<b>Storage Instruction</b>	Store reagents of the antibody pair set at -20°C or lower. Please aliquot to avoid repeated freeze thaw cycle. Reagents should be returned to -20°C storage immediately after use.

## Applications

- Immunoprecipitation-Western Blot

[Protocol Download](#)

## Gene Info — RAB22A

**Entrez GeneID** [57403](#)

**Gene Name** RAB22A

**Gene Alias** MGC16770

**Gene Description** RAB22A, member RAS oncogene family

**Gene Ontology** [Hyperlink](#)

**Gene Summary** The protein encoded by this gene is a member of the RAB family of small GTPases. The GTP-bound form of the encoded protein has been shown to interact with early-endosomal antigen 1, and may be involved in the trafficking of and interaction between endosomal compartments. [provided by RefSeq]

**Other Designations** GTP-binding protein RAB22A|OTTHUMP00000031397|RAS-related protein RAB-22A

## Pathway

- [Endocytosis](#)