

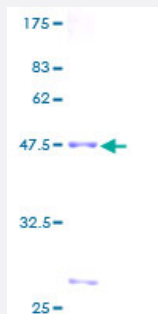
Full-Length

# RAB22A (Human) Recombinant Protein (P01)

Catalog # H00057403-P01

Size 25 ug, 10 ug

## Applications



## Specification

Product Description	Human RAB22A full-length ORF ( AAH15710, 1 a.a. - 194 a.a.) recombinant protein with GST-tag at N-terminal.
Sequence	MALRELRVCLLGDTGVGKSSIVWRFVEDSFDPNINPTIGASFMTKTVQYQNELHKFLIWDTAGQER FRALAPMYRGSAAAIVYDITKEETFSTLKNWVKELRRHGPPNVVAIAGNKCDLIDVREVMERDA KDYADSIHAIFVETSAKNAININELFIEISRRIPSTDANLPSSGGKGFKLRRQPSEPKRSCC
Host	Wheat Germ (in vitro)
Theoretical MW (kDa)	47.08
Interspecies Antigen Sequence	Mouse (97); Rat (84)
Preparation Method	<a href="#">in vitro wheat germ expression system</a>
Purification	Glutathione Sepharose 4 Fast Flow
Quality Control Testing	12.5% SDS-PAGE Stained with Coomassie Blue.
Storage Buffer	50 mM Tris-HCl, 10 mM reduced Glutathione, pH=8.0 in the elution buffer.
Storage Instruction	Store at -80°C. Aliquot to avoid repeated freezing and thawing.

## Note

Best use within three months from the date of receipt of this protein.

## Applications

- Enzyme-linked Immunoabsorbent Assay
- Western Blot (Recombinant protein)
- Antibody Production
- Protein Array

## Gene Info — RAB22A

Entrez GeneID [57403](#)

GeneBank Accession# [BC015710](#)

Protein Accession# [AAH15710](#)

Gene Name RAB22A

Gene Alias MGC16770

Gene Description RAB22A, member RAS oncogene family

Gene Ontology [Hyperlink](#)

**Gene Summary** The protein encoded by this gene is a member of the RAB family of small GTPases. The GTP-bound form of the encoded protein has been shown to interact with early-endosomal antigen 1, and may be involved in the trafficking of and interaction between endosomal compartments. [provided by RefSeq]

**Other Designations** GTP-binding protein RAB22A|OTTHUMP00000031397|RAS-related protein RAB-22A

## Pathway

- [Endocytosis](#)