

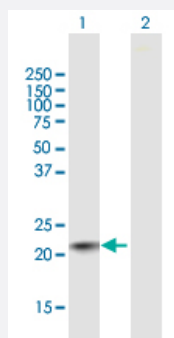
MaxPab®

RAB22A MaxPab mouse polyclonal antibody (B01)

Catalog # H00057403-B01

Size 50 uL

Applications



Western Blot (Transfected lysate)

Western Blot analysis of RAB22A expression in transfected 293T cell line ([H00057403-T01](#)) by RAB22A MaxPab polyclonal antibody.

Lane 1: RAB22A transfected lysate(21.45 KDa).

Lane 2: Non-transfected lysate.

Specification

Product Description	Mouse polyclonal antibody raised against a full-length human RAB22A protein.
Immunogen	RAB22A (AAH15710.1, 1 a.a. ~ 194 a.a) full-length human protein.
Sequence	MALRELRVCLLGDTGVGKSSIVWRFVEDSFDPNINPTIGASFMTKTVQYQNELHKFLWDTAGQER FRALAPMYRGSAAAIVYDITKEETFSTLKNWVKELRRHGPPNIVVAIAGNKCDLIDVREVMERDA KDYADSIHAIFVETSAKNAININELFIEISRRIPSTDANLPSSGGKGFKLRRQPSEPKRSCC
Host	Mouse
Reactivity	Human
Interspecies Antigen Sequence	Mouse (97); Rat (84)
Quality Control Testing	Antibody reactive against mammalian transfected lysate.
Storage Buffer	No additive
Storage Instruction	Store at -20°C or lower. Aliquot to avoid repeated freezing and thawing.
Note	For IHC and IF applications, antibody purification with Protein A will be needed prior to use.

Applications

- Western Blot (Transfected lysate)

Western Blot analysis of RAB22A expression in transfected 293T cell line ([H00057403-T01](#)) by RAB22A MaxPab polyclonal antibody.

Lane 1: RAB22A transfected lysate(21.45 KDa).

Lane 2: Non-transfected lysate.

[Protocol Download](#)

Gene Info — RAB22A

Entrez GeneID	57403
---------------	-----------------------

GeneBank Accession#	BC015710
---------------------	--------------------------

Protein Accession#	AAH15710
--------------------	--------------------------

Gene Name	RAB22A
-----------	--------

Gene Alias	MGC16770
------------	----------

Gene Description	RAB22A, member RAS oncogene family
------------------	------------------------------------

Gene Ontology	Hyperlink
---------------	---------------------------

Gene Summary	The protein encoded by this gene is a member of the RAB family of small GTPases. The GTP-bound form of the encoded protein has been shown to interact with early-endosomal antigen 1, and may be involved in the trafficking of and interaction between endosomal compartments. [provided by RefSeq]
--------------	--

Other Designations	GTP-binding protein RAB22A OTTHUMP00000031397 RAS-related protein RAB-22A
--------------------	---

Pathway

- [Endocytosis](#)