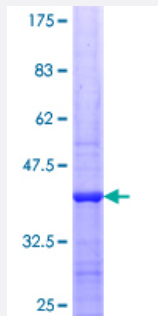


# CLK4 (Human) Recombinant Protein (Q01)

Catalog # H00057396-Q01

Size 25 ug, 10 ug

## Applications



## Specification

<b>Product Description</b>	Human CLK4 partial ORF ( NP_065717.1, 377 a.a. - 481 a.a.) recombinant protein with GST-tag at N-terminal.
<b>Sequence</b>	FQTHDSKEHLAMMERILGPIQHQMIQKTRKRKYFHHNQLDWDEHSSAGRYVRRRCKPLKEFMLC HDEEHEKLFDLVRRMLEYDPTQRITLDEALQHPFFDLLKKK
<b>Host</b>	Wheat Germ (in vitro)
<b>Theoretical MW (kDa)</b>	37.29
<b>Interspecies Antigen Sequence</b>	Mouse (97)
<b>Preparation Method</b>	<a href="#">in vitro wheat germ expression system</a>
<b>Purification</b>	Glutathione Sepharose 4 Fast Flow
<b>Quality Control Testing</b>	12.5% SDS-PAGE Stained with Coomassie Blue.
<b>Storage Buffer</b>	50 mM Tris-HCl, 10 mM reduced Glutathione, pH=8.0 in the elution buffer.
<b>Storage Instruction</b>	Store at -80°C. Aliquot to avoid repeated freezing and thawing.
<b>Note</b>	Best use within three months from the date of receipt of this protein.

## Applications

- Enzyme-linked Immunoabsorbent Assay
- Western Blot (Recombinant protein)
- Antibody Production
- Protein Array

## Gene Info — CLK4

Entrez GeneID [57396](#)

GeneBank Accession# [NM\\_020666](#)

Protein Accession# [NP\\_065717.1](#)

Gene Name CLK4

Gene Alias DKFZp686A20267

Gene Description CDC-like kinase 4

Omim ID [607969](#)

Gene Ontology [Hyperlink](#)

**Gene Summary** The protein encoded by this gene belongs to the CDC2-like protein kinase (CLK) family. This protein kinase can interact with and phosphorylate the serine- and arginine-rich (SR) proteins, which are known to play an important role in the formation of spliceosomes, and thus may be involved in the regulation of alternative splicing. Studies in the Israeli sand rat *Psammomys obesus* suggested that the ubiquitin-like 5 (UBL5/BEACON), a highly conserved ubiquitin-like protein, may interact with and regulate the activity of this kinase. Multiple alternatively spliced transcript variants have been observed, but the full-length nature of which have not yet been determined. [provided by RefSeq]

**Other Designations** dual specificity protein kinase CLK4|protein serine threonine kinase Clk4