

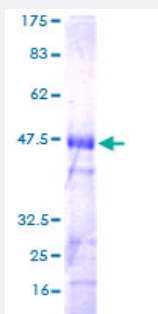
Full-Length

RHOJ (Human) Recombinant Protein (P01)

Catalog # H00057381-P01

Size 25 ug, 10 ug

Applications



Specification

Product Description

Human RHOJ full-length ORF (AAH62575, 1 a.a. - 214 a.a.) recombinant protein with GST-tag at N-terminal.

Sequence

MNCKEGTDSSCGCRGNDEKKMLKCVVVG DGAVGKTCLLSYANDAFPEEYVPTVFDHYAVTVT
VGGKQHLLGLYDTAGQEDYNQLRPLSYNTDVF LICFSV VNPAS YHNVQEEWPELKDCMPHVP
YVLIGTQIDLRDDPKTLARLLYMKEKPLTYEHGVKLAKAIGAQCYLECSALTQKGLKAVFDEAILTIFH
PKKKKKRRCSEGHSCCSII

Host

Wheat Germ (in vitro)

Theoretical MW (kDa)

49.28

Interspecies Antigen Sequence

Mouse (92); Rat (93)

Preparation Method

[in vitro wheat germ expression system](#)

Purification

Glutathione Sepharose 4 Fast Flow

Quality Control Testing

12.5% SDS-PAGE Stained with Coomassie Blue.

Storage Buffer

50 mM Tris-HCl, 10 mM reduced Glutathione, pH=8.0 in the elution buffer.

Storage Instruction

Store at -80°C. Aliquot to avoid repeated freezing and thawing.

Note

Best use within three months from the date of receipt of this protein.

Applications

- Enzyme-linked Immunoabsorbent Assay
- Western Blot (Recombinant protein)
- Antibody Production
- Protein Array

Gene Info — RHOJ

Entrez GeneID [57381](#)

GeneBank Accession# [BC062575](#)

Protein Accession# [AAH62575](#)

Gene Name RHOJ

Gene Alias ARHJ, FLJ14445, MGC34777, RASL7B, TC10B, TCL

Gene Description ras homolog gene family, member J

Omim ID [607653](#)

Gene Ontology [Hyperlink](#)

Gene Summary ARHJ belongs to the Rho family of small GTP-binding proteins. Rho proteins regulate the dynamic assembly of cytoskeletal components for several physiologic processes, such as cell proliferation and motility and the establishment of cell polarity. They are also involved in pathophysiologic process, such as cell transformation and metastasis.[supplied by OMIM]

Other Designations RAS-like, family 7, member B|TC10-like Rho GTPase

Disease

- [Tobacco Use Disorder](#)