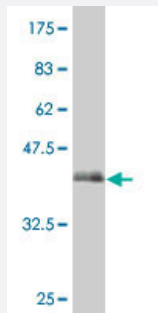


SLC39A10 polyclonal antibody (A01)

Catalog # H00057181-A01

Size 50 uL

Applications



Western Blot detection against Immunogen (37.99 KDa) .

Specification

Product Description	Mouse polyclonal antibody raised against a partial recombinant SLC39A10.
Immunogen	SLC39A10 (NP_065075, 514 a.a. ~ 621 a.a) partial recombinant protein with GST tag.
Sequence	CIRMFKHYKQQRGKQKWFMKQNTTEESTIGRKLSDHKLNNTPDSDWLQLKPLAGTDDSVVSEDRL NETELTDLEGQQESPCKNYLCIEEEKIIDHSHSDGLHTIHEHDL
Host	Mouse
Reactivity	Human
Quality Control Testing	Antibody Reactive Against Recombinant Protein. Western Blot detection against Immunogen (37.99 KDa) .
Storage Buffer	50 % glycerol
Storage Instruction	Store at -20°C or lower. Aliquot to avoid repeated freezing and thawing.

Applications

- Western Blot (Recombinant protein)

[Protocol Download](#)

- ELISA

Gene Info — SLC39A10

Entrez GeneID [57181](#)

GeneBank Accession# [NM_020342](#)

Protein Accession# [NP_065075](#)

Gene Name SLC39A10

Gene Alias DKFZp781L10106, LZT-Hs2, MGC126565, MGC138428

Gene Description solute carrier family 39 (zinc transporter), member 10

Omim ID [608733](#)

Gene Ontology [Hyperlink](#)

Gene Summary Zinc is an essential cofactor for hundreds of enzymes. It is involved in protein, nucleic acid, carbohydrate, and lipid metabolism, as well as in the control of gene transcription, growth, development, and differentiation. SLC39A10 belongs to a subfamily of proteins that show structural characteristics of zinc transporters (Taylor and Nicholson, 2003 [PubMed 12659941]).[supplied by OMIM]

Other Designations solute carrier family 39 (metal ion transporter), member 10

Disease

- [Genetic Predisposition to Disease](#)
- [Prostatic Neoplasms](#)
- [Tobacco Use Disorder](#)