

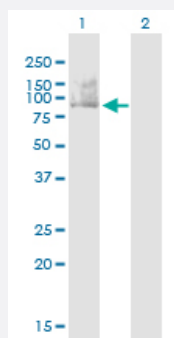
CX Grade

SMURF1 monoclonal antibody (M01J), clone 1D7

Catalog # H00057154-M01J

Size 100 ug

Applications

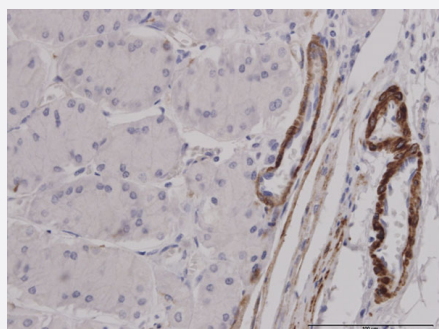


Western Blot (Transfected lysate)

Western Blot analysis of SMURF1 expression in transfected 293T cell line by SMURF1 monoclonal antibody (M01J), clone 1D7.

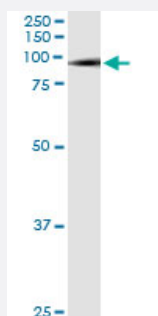
Lane 1: SMURF1 transfected lysate (Predicted MW: 83.4000000 KDa).

Lane 2: Non-transfected lysate.



Immunohistochemistry (Formalin/PFA-fixed paraffin-embedded sections)

Immunoperoxidase of monoclonal antibody to SMURF1 on formalin-fixed paraffin-embedded human stomach. [antibody concentration 3 ug/ml]

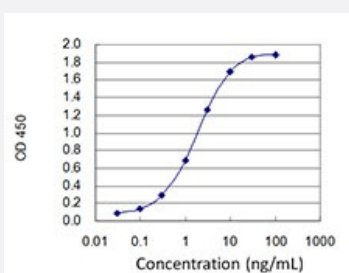


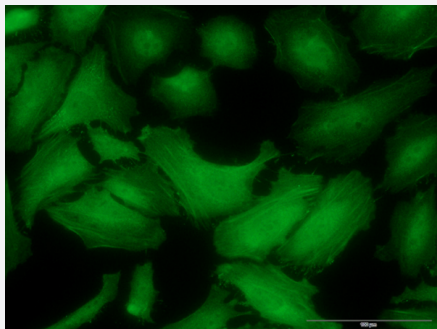
Immunoprecipitation

Immunoprecipitation of SMURF1 transfected lysate using anti-SMURF1 monoclonal antibody and Protein A Magnetic Bead, and immunoblotted with SMURF1 MaxPab rabbit polyclonal antibody.

Sandwich ELISA (Recombinant protein)

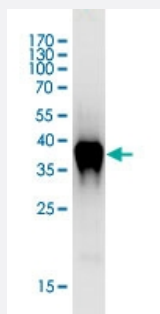
Detection limit for recombinant GST tagged SMURF1 is 0.03 ng/ml as a capture antibody.





Immunofluorescence

Immunofluorescence of monoclonal antibody to SMURF1 on HeLa cell .
[antibody concentration 10 ug/ml]



Western Blot detection against Immunogen (37.18 KDa) .

Specification

Product Description	Mouse monoclonal antibody raised against a partial recombinant SMURF1. This product is belong to Cell Culture Grade Antibody (CX Grade).
Immunogen	SMURF1 (NP_065162, 165 a.a. ~ 268 a.a) partial recombinant protein with GST tag. MW of the GST tag alone is 26 KDa.
Sequence	DSGPGRPLSCFMEEPAPYTDSTGAAAGGGNCRFVESPSQDQRLQAQRLRNPDVRGSLQTPQN RPHGHQSPELPEGYEQRRTTVQGQVYFLHTQTGVSTWHDPRIP
Host	Mouse
Reactivity	Human
Interspecies Antigen Sequence	Mouse (98); Rat (98)
Preparation Method	Cell Culture Production
Isotype	IgG2a Kappa
Quality Control Testing	Antibody Reactive Against Recombinant Protein. Western Blot detection against Immunogen (37.18 KDa) .
Storage Buffer	In 1x PBS, pH 7.4
Storage Instruction	Store at -20°C or lower. Aliquot to avoid repeated freezing and thawing.

Applications

- Western Blot (Transfected lysate)

Western Blot analysis of SMURF1 expression in transfected 293T cell line by SMURF1 monoclonal antibody (M01J), clone 1D7.

Lane 1: SMURF1 transfected lysate (Predicted MW: 83.4000000 KDa).

Lane 2: Non-transfected lysate.

[Protocol Download](#)

- Western Blot (Recombinant protein)

[Protocol Download](#)

- Immunohistochemistry (Formalin/PFA-fixed paraffin-embedded sections)

Immunoperoxidase of monoclonal antibody to SMURF1 on formalin-fixed paraffin-embedded human stomach. [antibody concentration 3 ug/ml]

[Protocol Download](#)

- Immunoprecipitation

Immunoprecipitation of SMURF1 transfected lysate using anti-SMURF1 monoclonal antibody and Protein A Magnetic Bead, and immunoblotted with SMURF1 MaxPab rabbit polyclonal antibody.

[Protocol Download](#)

- Sandwich ELISA (Recombinant protein)

Detection limit for recombinant GST tagged SMURF1 is 0.03 ng/ml as a capture antibody.

[Protocol Download](#)

- ELISA

- Immunofluorescence

Immunofluorescence of monoclonal antibody to SMURF1 on HeLa cell . [antibody concentration 10 ug/ml]

Gene Info — SMURF1

Entrez GeneID [57154](#)

GeneBank Accession# [NM_020429](#)

Protein Accession#	NP_065162
Gene Name	SMURF1
Gene Alias	KIAA1625
Gene Description	SMAD specific E3 ubiquitin protein ligase 1
Omim ID	605568
Gene Ontology	Hyperlink
Gene Summary	<p>This gene encodes a ubiquitin ligase that is specific for receptor-regulated SMAD proteins in the bone morphogenetic protein (BMP) pathway. A similar protein in <i>Xenopus</i> is involved in embryonic pattern formation. Alternative splicing results in multiple transcript variants encoding different isoforms. An additional transcript variant has been identified, but its full length sequence has not been determined. [provided by RefSeq]</p>
Other Designations	E3 ubiquitin ligase SMURF1 Smad ubiquitination regulatory factor 1 Smad-specific E3 ubiquitin ligase 1

Pathway

- [Endocytosis](#)
- [TGF-beta signaling pathway](#)
- [Ubiquitin mediated proteolysis](#)