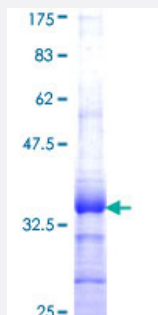


SLURP1 (Human) Recombinant Protein (Q01)

Catalog # H00057152-Q01

Size 25 ug, 10 ug

Applications



Specification

Product Description	Human SLURP1 partial ORF (NP_065160, 25 a.a. - 102 a.a.) recombinant protein with GST-tag at N-terminal.
Sequence	CYTCKEPMTSASCRTITRCKPEDTACMTTLVTVEAEYPFNQSPVVTRSCSSSCVATDPDSIGAAH LIFCCFRDLCNSE
Host	Wheat Germ (in vitro)
Theoretical MW (kDa)	34.32
Interspecies Antigen Sequence	Mouse (69); Rat (71)
Preparation Method	in vitro wheat germ expression system
Purification	Glutathione Sepharose 4 Fast Flow
Quality Control Testing	12.5% SDS-PAGE Stained with Coomassie Blue.
Storage Buffer	50 mM Tris-HCl, 10 mM reduced Glutathione, pH=8.0 in the elution buffer.
Storage Instruction	Store at -80°C. Aliquot to avoid repeated freezing and thawing.
Note	Best use within three months from the date of receipt of this protein.

Applications

- Enzyme-linked Immunoabsorbent Assay
- Western Blot (Recombinant protein)
- Antibody Production
- Protein Array

Gene Info — SLURP1

Entrez GeneID [57152](#)

GeneBank Accession# [NM_020427](#)

Protein Accession# [NP_065160](#)

Gene Name SLURP1

Gene Alias ANUP, ARS, ArsB, LY6LS, MDM

Gene Description secreted LY6/PLAUR domain containing 1

Omim ID [248300 606119](#)

Gene Ontology [Hyperlink](#)

Gene Summary The protein encoded by this gene is a member of the Ly6/uPAR family but lacks a GPI-anchoring signal sequence. It is thought that this secreted protein contains antitumor activity. Mutations in this gene have been associated with Mal de Meleda, a rare autosomal recessive skin disorder. This gene maps to the same chromosomal region as several members of the Ly6/uPAR family of glycoprotein receptors. [provided by RefSeq]

Other Designations ARS component B|ARS(component B)-81/S|anti-neoplastic urinary protein|lymphocyte antigen 6-Like secreted|results in cobblestone changes in the skin of the palm|secreted Ly6/uPAR related protein 1