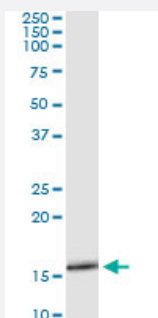


SLURP1 (Human) IP-WB Antibody Pair

Catalog # H00057152-PW1

Size 1 Set

Applications



Immunoprecipitation of SLURP1 transfected lysate using mouse monoclonal anti-SLURP1 and Protein A Magnetic Bead ([U0007](#)), and immunoblotted with rabbit polyclonal anti-SLURP1.

Specification

Product Description	This IP-WB antibody pair set comes with one antibody for immunoprecipitation and another to detect the precipitated protein in western blot.
Reactivity	Human
Interspecies Antigen Sequence	Mouse (69); Rat (71)
Quality Control Testing	Immunoprecipitation-Western Blot (IP-WB) Immunoprecipitation of SLURP1 transfected lysate using mouse monoclonal anti-SLURP1 and Protein A Magnetic Bead (U0007), and immunoblotted with rabbit polyclonal anti-SLURP1.
Supplied Product	Antibody pair set content: 1. Antibody pair for IP: mouse monoclonal anti-SLURP1 (300 ug) 2. Antibody pair for WB: rabbit polyclonal anti-SLURP1 (50 ul)
Storage Instruction	Store reagents of the antibody pair set at -20°C or lower. Please aliquot to avoid repeated freeze thaw cycle. Reagents should be returned to -20°C storage immediately after use.

Applications

- Immunoprecipitation-Western Blot

[Protocol Download](#)

Gene Info — SLURP1

Entrez GeneID [57152](#)

Gene Name SLURP1

Gene Alias ANUP, ARS, ArsB, LY6LS, MDM

Gene Description secreted LY6/PLAUR domain containing 1

Omim ID [248300 606119](#)

Gene Ontology [Hyperlink](#)

Gene Summary The protein encoded by this gene is a member of the Ly6/uPAR family but lacks a GPI-anchoring signal sequence. It is thought that this secreted protein contains antitumor activity. Mutations in this gene have been associated with Mal de Meleda, a rare autosomal recessive skin disorder. This gene maps to the same chromosomal region as several members of the Ly6/uPAR family of glycoprotein receptors. [provided by RefSeq]

Other Designations ARS component B|ARS(component B)-81/S|anti-neoplastic urinary protein|lymphocyte antigen 6-I like secreted|results in cobblestone changes in the skin of the palm|secreted Ly6/uPAR related protein 1