

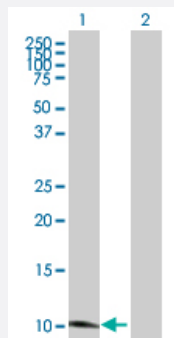
MaxPab®

SLURP1 purified MaxPab rabbit polyclonal antibody (D01P)

Catalog # H00057152-D01P

Size 100 ug

Applications



Western Blot (Transfected lysate)

Western Blot analysis of SLURP1 expression in transfected 293T cell line ([H00057152-T01](#)) by SLURP1 MaxPab polyclonal antibody.

Lane 1: SLURP1 transfected lysate(11.20 KDa).

Lane 2: Non-transfected lysate.

Specification

Product Description	Rabbit polyclonal antibody raised against a full-length human SLURP1 protein.
Immunogen	SLURP1 (NP_065160.1, 1 a.a. ~ 103 a.a) full-length human protein.
Sequence	MASRWAVQLLLVAAWSMGCGEALKCYTCKEPMTSASCRTITRCKPEDTACMTTLVTVEAEYPFN QSPVTRSCSSSCVATDPDSIGAAHLIFCCFRDLCNSEL
Host	Rabbit
Reactivity	Human
Interspecies Antigen Sequence	Mouse (69); Rat (71)
Quality Control Testing	Antibody reactive against mammalian transfected lysate.
Storage Buffer	In 1x PBS, pH 7.4
Storage Instruction	Store at -20°C or lower. Aliquot to avoid repeated freezing and thawing.

Applications

- Western Blot (Transfected lysate)

Western Blot analysis of SLURP1 expression in transfected 293T cell line ([H00057152-T01](#)) by SLURP1 MaxPab polyclonal antibody.

Lane 1: SLURP1 transfected lysate(11.20 KDa).

Lane 2: Non-transfected lysate.

[Protocol Download](#)

Gene Info — SLURP1

Entrez GeneID	57152
---------------	-----------------------

GeneBank Accession#	NM_020427
---------------------	---------------------------

Protein Accession#	NP_065160.1
--------------------	-----------------------------

Gene Name	SLURP1
-----------	--------

Gene Alias	ANUP, ARS, ArsB, LY6LS, MDM
------------	-----------------------------

Gene Description	secreted LY6/PLAUR domain containing 1
------------------	--

Omim ID	248300 606119
---------	-------------------------------

Gene Ontology	Hyperlink
---------------	---------------------------

Gene Summary	The protein encoded by this gene is a member of the Ly6/uPAR family but lacks a GPI-anchoring signal sequence. It is thought that this secreted protein contains antitumor activity. Mutations in this gene have been associated with Mal de Meleda, a rare autosomal recessive skin disorder. This gene maps to the same chromosomal region as several members of the Ly6/uPAR family of glycoprotein receptors. [provided by RefSeq]
--------------	--

Other Designations	ARS component B ARS(component B)-81/S anti-neoplastic urinary protein lymphocyte antigen 6-like secreted results in cobblestone changes in the skin of the palm secreted Ly6/uPAR related protein 1
--------------------	---

Publication Reference

- [Corneal Expression of SLURP-1 by Age, Sex, Genetic Strain, and Ocular Surface Health.](#)

Swamynathan S, Delp EE, Harvey SA, Loughner CL, Raju L, Swamynathan SK.

Investigative Ophthalmology & Visual Science 2015 Dec; 56(13):7888.

Application: ELISA, Human, Tears