

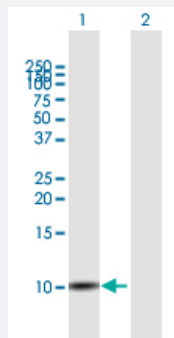
MaxPab®

SLURP1 purified MaxPab mouse polyclonal antibody (B01P)

Catalog # H00057152-B01P

Size 50 ug

Applications



Western Blot (Transfected lysate)

Western Blot analysis of SLURP1 expression in transfected 293T cell line ([H00057152-T01](#)) by SLURP1 MaxPab polyclonal antibody.

Lane 1: SLURP1 transfected lysate(11.33 KDa).

Lane 2: Non-transfected lysate.

Specification

Product Description	Mouse polyclonal antibody raised against a full-length human SLURP1 protein.
Immunogen	SLURP1 (NP_065160, 1 a.a. ~ 103 a.a) full-length human protein.
Sequence	MASRWAVQLLLVAAWSMGCGEALKCYTCKEPMTSASCRTITRCKPEDTACMTTLVTVEAEYPFN QSPVVTTRSCSSSCVATDPDSIGAAHLIFCCFRDLCNSEL
Host	Mouse
Reactivity	Human
Interspecies Antigen Sequence	Mouse (69); Rat (71)
Quality Control Testing	Antibody reactive against mammalian transfected lysate.
Storage Buffer	In 1x PBS, pH 7.4
Storage Instruction	Store at -20°C or lower. Aliquot to avoid repeated freezing and thawing.

Applications

- Western Blot (Transfected lysate)

Western Blot analysis of SLURP1 expression in transfected 293T cell line ([H00057152-T01](#)) by SLURP1 MaxPab polyclonal antibody.

Lane 1: SLURP1 transfected lysate(11.33 KDa).

Lane 2: Non-transfected lysate.

[Protocol Download](#)

Gene Info — SLURP1

Entrez GeneID [57152](#)

GeneBank Accession# [NM_020427](#)

Protein Accession# [NP_065160](#)

Gene Name SLURP1

Gene Alias ANUP, ARS, ArsB, LY6LS, MDM

Gene Description secreted LY6/PLAUR domain containing 1

Omim ID [248300 606119](#)

Gene Ontology [Hyperlink](#)

Gene Summary The protein encoded by this gene is a member of the Ly6/uPAR family but lacks a GPI-anchoring signal sequence. It is thought that this secreted protein contains antitumor activity. Mutations in this gene have been associated with Mal de Meleda, a rare autosomal recessive skin disorder. This gene maps to the same chromosomal region as several members of the Ly6/uPAR family of glycoprotein receptors. [provided by RefSeq]

Other Designations ARS component B|ARS(component B)-81/S|anti-neoplastic urinary protein|lymphocyte antigen 6-like secreted|results in cobblestone changes in the skin of the palm|secreted Ly6/uPAR related protein 1