

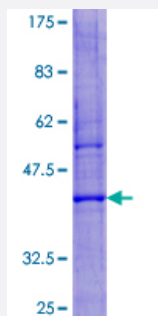
Full-Length

LYZL6 (Human) Recombinant Protein (P01)

Catalog # H00057151-P01

Size 25 ug, 10 ug

Applications



Specification

Product Description	Human LYZL6 full-length ORF (NP_065159.1, 1 a.a. - 148 a.a.) recombinant protein with GST-tag at N-terminal.
Sequence	MTKALLMLVSSFLALNQASLISRCDLAQVLQLEDLDGFEGYSLSDWLCLAFVESKFNISKINENAD GSFDYGLFQINSHYWCNDYKSYSENLCVDCQDLLNPALLAGIHCARVSGARGMNNWVEWRL HCSGRPLFYWLTGCRLR
Host	Wheat Germ (in vitro)
Theoretical MW (kDa)	43.4
Interspecies Antigen Sequence	Mouse (71); Rat (70)
Preparation Method	in vitro wheat germ expression system
Purification	Glutathione Sepharose 4 Fast Flow
Quality Control Testing	12.5% SDS-PAGE Stained with Coomassie Blue.
Storage Buffer	50 mM Tris-HCl, 10 mM reduced Glutathione, pH=8.0 in the elution buffer.
Storage Instruction	Store at -80°C. Aliquot to avoid repeated freezing and thawing.

Note

Best use within three months from the date of receipt of this protein.

Applications

- Enzyme-linked Immunoabsorbent Assay
- Western Blot (Recombinant protein)
- Antibody Production
- Protein Array

Gene Info — LYZL6

Entrez GeneID [57151](#)

GeneBank Accession# [NM_020426.1](#)

Protein Accession# [NP_065159.1](#)

Gene Name LYZL6

Gene Alias 1700023H08Rik, LYC1, PRO1485, TKAL754

Gene Description lysozyme-like 6

Gene Ontology [Hyperlink](#)

Gene Summary Lysozymes (see LYZ; MIM 153450), especially C-type lysozymes, are well-recognized bacteriolytic factors widely distributed in the animal kingdom and play a mainly protective role in host defense. LYZL6 is a member of a family of lysozyme-like genes (Zhang et al., 2005 [PubMed 16014814]).[supplied by OMIM]

Other Designations OTTHUMP00000163949|lysozyme homolog