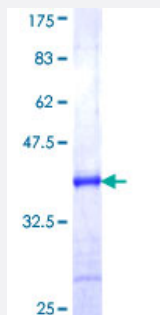


CHMP1B (Human) Recombinant Protein (Q01)

Catalog # H00057132-Q01

Size 25 ug, 10 ug

Applications



Specification

Product Description	Human CHMP1B partial ORF (NP_065145, 145 a.a. - 199 a.a.) recombinant protein with GST-tag at N-terminal.
Sequence	PQNQVDMLLQEMADEAGLDLNMELPQGQTGSVGTSVASAEQDELSQRLARLRDQV
Host	Wheat Germ (in vitro)
Theoretical MW (kDa)	31.79
Interspecies Antigen Sequence	Mouse (97); Rat (99)
Preparation Method	in vitro wheat germ expression system
Purification	Glutathione Sepharose 4 Fast Flow
Quality Control Testing	12.5% SDS-PAGE Stained with Coomassie Blue.
Storage Buffer	50 mM Tris-HCl, 10 mM reduced Glutathione, pH=8.0 in the elution buffer.
Storage Instruction	Store at -80°C. Aliquot to avoid repeated freezing and thawing.
Note	Best use within three months from the date of receipt of this protein.

Applications

- Enzyme-linked Immunoabsorbent Assay
- Western Blot (Recombinant protein)
- Antibody Production
- Protein Array

Gene Info — CHMP1B

Entrez GeneID [57132](#)

GeneBank Accession# [NM_020412](#)

Protein Accession# [NP_065145](#)

Gene Name CHMP1B

Gene Alias C10orf2, C18-ORF2, C18orf2, CHMP1.5, Vps46-2

Gene Description chromatin modifying protein 1B

Omim ID [606486](#)

Gene Ontology [Hyperlink](#)

Gene Summary CHMP1B belongs to the chromatin-modifying protein/charged multivesicular body protein (CHMP) family. These proteins are components of ESCRT-III (endosomal sorting complex required for transport III), a complex involved in degradation of surface receptor proteins and formation of endocytic multivesicular bodies (MVBs). Some CHMPs have both nuclear and cytoplasmic/vesicular distributions, and one such CHMP, CHMP1A (MIM 164010), is required for both MVB formation and regulation of cell cycle progression (Tsang et al., 2006 [PubMed 16730941]).[supplied by OMIM]

Other Designations vacuolar protein sorting 46-2

Pathway

- [Endocytosis](#)

Disease

- [Bipolar Disorder](#)
- [Genetic Predisposition to Disease](#)
- [Schizophrenia](#)