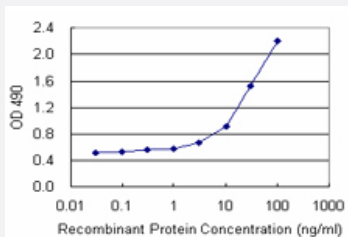


CD248 (Human) Matched Antibody Pair

Catalog # H00057124-AP11

Size 1 Set

Applications



Sandwich ELISA detection sensitivity ranging from 3 ng/ml to 100 ng/ml.

Specification

Product Description	This antibody pair set comes with a matched antibody pair to detect and quantify the protein level of human CD248.
Reactivity	Human
Interspecies Antigen Sequence	Mouse (77)
Quality Control Testing	Standard curve using recombinant protein (H00057124-P01) as an analyte. Sandwich ELISA detection sensitivity ranging from 3 ng/ml to 100 ng/ml.
Supplied Product	Antibody pair set content: 1. Capture antibody: rabbit MaxPab® affinity purified polyclonal anti-CD248 (100 ug) 2. Detection antibody: mouse monoclonal anti-CD248, IgG2a Kappa (20 ug) *Reagents are sufficient for at least 1-2 x 96 well plates using recommended protocols.
Storage Instruction	Store reagents of the antibody pair set at -20°C or lower. Please aliquot to avoid repeated freeze thaw cycle. Reagents should be returned to -20°C storage immediately after use.

Applications

- ELISA Pair (Recombinant protein)

[Protocol Download](#)

Gene Info — CD248

Entrez GeneID	57124
Gene Name	CD248
Gene Alias	CD164L1, MGC119478, MGC119479, TEM1
Gene Description	CD248 molecule, endosialin
Omim ID	606064
Gene Ontology	Hyperlink
Gene Summary	O
Other Designations	2610111G01Rik CD164 sialomucin-like 1 CD248 antigen, endosialin endosialin tumor endothelial marker 1

Disease

- [Kidney Failure](#)