

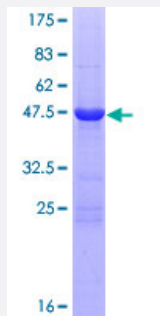
Full-Length

RAB25 (Human) Recombinant Protein (P01)

Catalog # H00057111-P01

Size 25 ug, 10 ug

Applications



Specification

Product Description	Human RAB25 full-length ORF (NP_065120.2, 1 a.a. - 213 a.a.) recombinant protein with GST-tag at N-terminal.
Sequence	MGNNGTEEDYNFVKVVLIGESGVGKTNLLSRFTRNEFSHDSRTTIGVEFSTRTVMLGTAAVKAQW DTAGLERYRAITSAYRGAVGALLVFDLTQHQTAVVERWLKELYDHAEATVVMLVGKSDLSQA REVPTEEARMFAENNGLLFLETSALDSTNVELAFETVLKEIFAKVSKQRQNSIRTNAILGSAQAG QEPGPGEKRACCISL
Host	Wheat Germ (in vitro)
Theoretical MW (kDa)	49.9
Interspecies Antigen Sequence	Mouse (95); Rat (96)
Preparation Method	in vitro wheat germ expression system
Purification	Glutathione Sepharose 4 Fast Flow
Quality Control Testing	12.5% SDS-PAGE Stained with Coomassie Blue.
Storage Buffer	50 mM Tris-HCl, 10 mM reduced Glutathione, pH=8.0 in the elution buffer.
Storage Instruction	Store at -80°C. Aliquot to avoid repeated freezing and thawing.

Note

Best use within three months from the date of receipt of this protein.

Applications

- Enzyme-linked Immunoabsorbent Assay
- Western Blot (Recombinant protein)
- Antibody Production
- Protein Array

Gene Info — RAB25

Entrez GeneID [57111](#)

GeneBank Accession# [NM_020387.2](#)

Protein Accession# [NP_065120.2](#)

Gene Name RAB25

Gene Alias CATX-8

Gene Description RAB25, member RAS oncogene family

Gene Ontology [Hyperlink](#)

Gene Summary RAB proteins, such as RAB25, are members of the RAS superfamily of small GTPases that are involved in membrane trafficking. Members of the RAB11 subfamily, including RAB25, control the return of internalized membrane-associated moieties to the cell surface (Caswell et al., 2007 [PubMed 17925226]).[supplied by OMIM]

Other Designations OTTHUMP00000018847