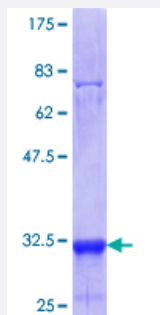


# KLP1 (Human) Recombinant Protein (Q01)

Catalog # H00057106-Q01

Size 25 ug, 10 ug

## Applications



## Specification

<b>Product Description</b>	Human KLP1 partial ORF ( NP_065111.1, 1 a.a. - 56 a.a.) recombinant protein with GST-tag at N-terminal.
<b>Sequence</b>	MAPSHLSVREMREDEKPLVLEMLKAGVKDTENRVALHALTRPPALLLLAAASSGLR
<b>Host</b>	Wheat Germ (in vitro)
<b>Theoretical MW (kDa)</b>	31.9
<b>Interspecies Antigen Sequence</b>	Mouse (95); Rat (93)
<b>Preparation Method</b>	<a href="#">in vitro wheat germ expression system</a>
<b>Purification</b>	Glutathione Sepharose 4 Fast Flow
<b>Quality Control Testing</b>	12.5% SDS-PAGE Stained with Coomassie Blue.
<b>Storage Buffer</b>	50 mM Tris-HCl, 10 mM reduced Glutathione, pH=8.0 in the elution buffer.
<b>Storage Instruction</b>	Store at -80°C. Aliquot to avoid repeated freezing and thawing.
<b>Note</b>	Best use within three months from the date of receipt of this protein.

## Applications

- Enzyme-linked Immunoabsorbent Assay
- Western Blot (Recombinant protein)
- Antibody Production
- Protein Array

## Gene Info — NAT14

Entrez GeneID	<a href="#">57106</a>
GeneBank Accession#	<a href="#">NM_020378</a>
Protein Accession#	<a href="#">NP_065111.1</a>
Gene Name	NAT14
Gene Alias	KLP1
Gene Description	N-acetyltransferase 14 (GCN5-related, putative)
Gene Ontology	<a href="#">Hyperlink</a>
Gene Summary	O
Other Designations	K562 cell-derived leucine-zipper-like protein 1 K562 cells-derived leucine zipper-like protein 1 K562 cells-derived leucine-zipper-like protein 1