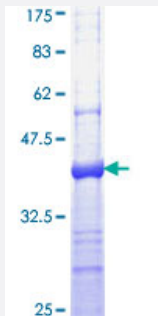


PCBP4 (Human) Recombinant Protein (Q01)

Catalog # H00057060-Q01

Size 25 ug, 10 ug

Applications



Specification

Product Description	Human PCBP4 partial ORF (NP_127503, 130 a.a. - 239 a.a.) recombinant protein with GST-tag at N-terminal.
Sequence	TTGAQVQVAGDLLPNSTERAVTVSGVPDAIILCVRQICAVILESPPKGATIPYHPSLSLGTVLLSANQ GFSVQGQYGAVTPAEVTKLQQLSSHAVPFATPSVVPGLDPGT
Host	Wheat Germ (in vitro)
Theoretical MW (kDa)	37.62
Interspecies Antigen Sequence	Mouse (97); Rat (97)
Preparation Method	in vitro wheat germ expression system
Purification	Glutathione Sepharose 4 Fast Flow
Quality Control Testing	12.5% SDS-PAGE Stained with Coomassie Blue.
Storage Buffer	50 mM Tris-HCl, 10 mM reduced Glutathione, pH=8.0 in the elution buffer.
Storage Instruction	Store at -80°C. Aliquot to avoid repeated freezing and thawing.
Note	Best use within three months from the date of receipt of this protein.

Applications

- Enzyme-linked Immunoabsorbent Assay
- Western Blot (Recombinant protein)
- Antibody Production
- Protein Array

Gene Info — PCBP4

Entrez GeneID [57060](#)

GeneBank Accession# [NM_033010](#)

Protein Accession# [NP_127503](#)

Gene Name PCBP4

Gene Alias LIP4, MCG10

Gene Description poly(rC) binding protein 4

Omim ID [608503](#)

Gene Ontology [Hyperlink](#)

Gene Summary This gene encodes a member of the KH-domain protein subfamily. Proteins of this subfamily, also referred to as alpha-CPs, bind to RNA with a specificity for C-rich pyrimidine regions. Alpha-CPs play important roles in post-transcriptional activities and have different cellular distributions. This gene is induced by the p53 tumor suppressor, and the encoded protein can suppress cell proliferation by inducing apoptosis and cell cycle arrest in G(2)-M. This gene's protein is found in the cytoplasm, yet it lacks the nuclear localization signals found in other subfamily members. Multiple alternatively spliced transcript variants have been described, but the full-length nature for only some has been determined. [provided by RefSeq]

Other Designations LYST-interacting protein|RNA binding protein MCG10|alphaCP-4 protein

Disease

- [Cardiovascular Diseases](#)
- [Diabetes Mellitus](#)

- [Edema](#)