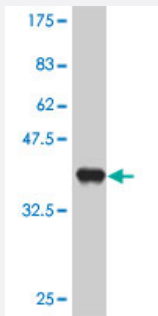


PCBP4 polyclonal antibody (A01)

Catalog # H00057060-A01

Size 50 uL

Applications



Western Blot detection against Immunogen (38.21 KDa) .

Specification

Product Description	Mouse polyclonal antibody raised against a partial recombinant PCBP4.
Immunogen	PCBP4 (NP_127503, 130 a.a. ~ 239 a.a) partial recombinant protein with GST tag.
Sequence	TTGAQVQVAGDLLPNSTERA VTVSGVPDAIILCVRQICAVILESPPKGATIPYHPSLSLGTVLLSANQ GFSVQGGYGA VTPAEVTKLQQLSSHAVPFATPSVVPGLDPGT
Host	Mouse
Reactivity	Human
Interspecies Antigen Sequence	Mouse (97); Rat (97)
Quality Control Testing	Antibody Reactive Against Recombinant Protein. Western Blot detection against Immunogen (38.21 KDa) .
Storage Buffer	50 % glycerol
Storage Instruction	Store at -20°C or lower. Aliquot to avoid repeated freezing and thawing.

Applications

- Western Blot (Recombinant protein)

[Protocol Download](#)

- ELISA

Gene Info — PCBP4

Entrez GeneID [57060](#)

GeneBank Accession# [NM_033010](#)

Protein Accession# [NP_127503](#)

Gene Name PCBP4

Gene Alias LIP4, MCG10

Gene Description poly(rC) binding protein 4

Omim ID [608503](#)

Gene Ontology [Hyperlink](#)

Gene Summary This gene encodes a member of the KH-domain protein subfamily. Proteins of this subfamily, also referred to as alpha-CPs, bind to RNA with a specificity for C-rich pyrimidine regions. Alpha-CPs play important roles in post-transcriptional activities and have different cellular distributions. This gene is induced by the p53 tumor suppressor, and the encoded protein can suppress cell proliferation by inducing apoptosis and cell cycle arrest in G(2)-M. This gene's protein is found in the cytoplasm, yet it lacks the nuclear localization signals found in other subfamily members. Multiple alternatively spliced transcript variants have been described, but the full-length nature for only some has been determined. [provided by RefSeq]

Other Designations LYST-interacting protein|RNA binding protein MCG10|alphaCP-4 protein

Disease

- [Cardiovascular Diseases](#)
- [Diabetes Mellitus](#)
- [Edema](#)