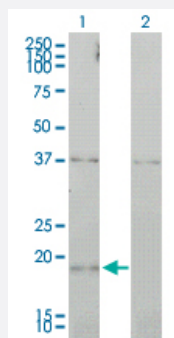


# CCNL1 monoclonal antibody (M01), clone 1F7-1C5

Catalog # H00057018-M01

Size 100 ug

## Applications

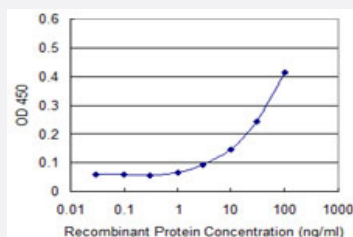


### Western Blot (Transfected lysate)

Western Blot analysis of CCNL1 expression in transfected 293T cell line by CCNL1 monoclonal antibody (M01), clone 1F7-1C5.

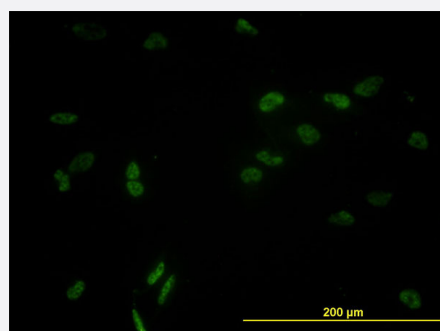
Lane 1: CCNL1 transfected lysate(18 KDa).

Lane 2: Non-transfected lysate.



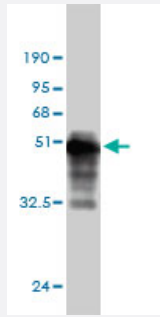
### Sandwich ELISA (Recombinant protein)

Detection limit for recombinant GST tagged CCNL1 is approximately 3ng/ml as a capture antibody.



### Immunofluorescence

Immunofluorescence of monoclonal antibody to CCNL1 on HeLa cell. [antibody concentration 10 ug/ml]



Western Blot detection against Immunogen (44.66 KDa) .

## Specification

<b>Product Description</b>	Mouse monoclonal antibody raised against a full length recombinant CCNL1.
<b>Immunogen</b>	CCNL1 (AAH38394, 1 a.a. ~ 172 a.a) full-length recombinant protein with GST tag. MW of the GST tag alone is 26 KDa.
<b>Sequence</b>	MASGPHSTATAAAAASSAAPSAGGSSSGTTTTTTTTGGILIGDRLYSEVSLTIDHSLIPEERLSPTP SMQDGLDLPSETDLRLGCELIQAAGILLRLPQVAMATGQVLFHRFFYSKSFVKHSFEIVAMACINL ASKIEEAPRRIRDVINVFHHLRQLRGKSDQLHLPKPG
<b>Host</b>	Mouse
<b>Reactivity</b>	Human
<b>Interspecies Antigen Sequence</b>	Mouse (96); Rat (97)
<b>Isotype</b>	IgG1 kappa
<b>Quality Control Testing</b>	Antibody Reactive Against Recombinant Protein. Western Blot detection against Immunogen (44.66 KDa) .
<b>Storage Buffer</b>	In 1x PBS, pH 7.4
<b>Storage Instruction</b>	Store at -20°C or lower. Aliquot to avoid repeated freezing and thawing.

## Applications

### ● Western Blot (Transfected lysate)

Western Blot analysis of CCNL1 expression in transfected 293T cell line by CCNL1 monoclonal antibody (M01), clone 1F7-1C5.

Lane 1: CCNL1 transfected lysate(18 KDa).

Lane 2: Non-transfected lysate.

[Protocol Download](#)

- Western Blot (Recombinant protein)

[Protocol Download](#)

- Sandwich ELISA (Recombinant protein)

Detection limit for recombinant GST tagged CCNL1 is approximately 3ng/ml as a capture antibody.

[Protocol Download](#)

- ELISA

- Immunofluorescence

Immunofluorescence of monoclonal antibody to CCNL1 on HeLa cell. [antibody concentration 10 ug/ml]

## Gene Info — CCNL1

Entrez GeneID	<a href="#">57018</a>
---------------	-----------------------

GeneBank Accession#	<a href="#">BC038394</a>
---------------------	--------------------------

Protein Accession#	<a href="#">AAH38394</a>
--------------------	--------------------------

Gene Name	CCNL1
-----------	-------

Gene Alias	BM-001, PRO1073, ania-6a
------------	--------------------------

Gene Description	cyclin L1
------------------	-----------

Gene Ontology	<a href="#">Hyperlink</a>
---------------	---------------------------

Other Designations	cyclin L ania-6a cyclin L gamma
--------------------	---------------------------------