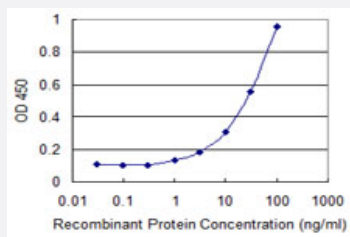


LHX9 monoclonal antibody (M01), clone 4C7

Catalog # H00056956-M01

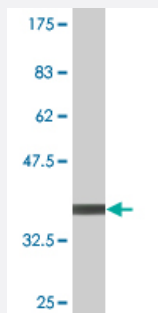
Size 100 ug

Applications



Sandwich ELISA (Recombinant protein)

Detection limit for recombinant GST tagged LHX9 is 0.3 ng/ml as a capture antibody.



Western Blot detection against Immunogen (35.09 KDa) .

Specification

Product Description

Mouse monoclonal antibody raised against a partial recombinant LHX9.

Immunogen

LHX9 (NP_001014434, 1 a.a. ~ 85 a.a) partial recombinant protein with GST tag. MW of the GST tag alone is 26 KDa.

Sequence

MLNGTTLEAAMLFGISGGHIQGIMEEMERRSKTEARLAKGAQLNGRDAGMPPLSPEKPALCAG
CGGKISDRYLLAVDKQWHLR

Host

Mouse

Reactivity

Human

Interspecies Antigen Sequence	Mouse (98); Rat (99)
Isotype	IgG2a Kappa
Quality Control Testing	Antibody Reactive Against Recombinant Protein. Western Blot detection against Immunogen (35.09 KDa) .
Storage Buffer	In 1x PBS, pH 7.4
Storage Instruction	Store at -20°C or lower. Aliquot to avoid repeated freezing and thawing.

Applications

- Western Blot (Recombinant protein)

[Protocol Download](#)

- Sandwich ELISA (Recombinant protein)

Detection limit for recombinant GST tagged LHX9 is 0.3 ng/ml as a capture antibody.

[Protocol Download](#)

- ELISA

Gene Info — LHX9

Entrez GeneID	56956
GeneBank Accession#	NM_001014434
Protein Accession#	NP_001014434
Gene Name	LHX9
Gene Alias	-
Gene Description	LIM homeobox 9
Omim ID	606066
Gene Ontology	Hyperlink

Gene Summary

This gene encodes a member of the LIM homeobox gene family of developmentally expressed transcription factors. The encoded protein contains a homeodomain and two cysteine-rich zinc-binding LIM domains involved in protein-protein interactions. The protein is highly similar to a mouse protein that causes gonadal agenesis when inactivated, suggesting a role in gonadal development. Alternative splicing results in multiple transcript variants. [provided by RefSeq]

Other Designations

OTTHUMP00000033675|OTTHUMP00000033678