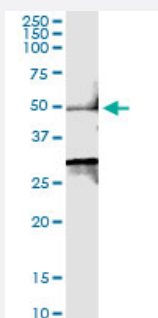


SMYD2 (Human) IP-WB Antibody Pair

Catalog # H00056950-PW2

Size 1 Set

Applications



Immunoprecipitation of SMYD2 transfected lysate using rabbit polyclonal anti-SMYD2 and Protein A Magnetic Bead ([U0007](#)), and immunoblotted with mouse purified polyclonal anti-SMYD2.

Specification

Product Description	This IP-WB antibody pair set comes with one antibody for immunoprecipitation and another to detect the precipitated protein in western blot.
Reactivity	Human
Interspecies Antigen Sequence	Rat (93)
Quality Control Testing	Immunoprecipitation-Western Blot (IP-WB) Immunoprecipitation of SMYD2 transfected lysate using rabbit polyclonal anti-SMYD2 and Protein A Magnetic Bead (U0007), and immunoblotted with mouse purified polyclonal anti-SMYD2.
Supplied Product	Antibody pair set content: 1. Antibody pair for IP: rabbit polyclonal anti-SMYD2 (300 ul) 2. Antibody pair for WB: mouse purified polyclonal anti-SMYD2 (50 ug)
Storage Instruction	Store reagents of the antibody pair set at -20°C or lower. Please aliquot to avoid repeated freeze thaw cycle. Reagents should be returned to -20°C storage immediately after use.

Applications

- Immunoprecipitation-Western Blot

[Protocol Download](#)

Gene Info — SMYD2

Entrez GeneID	56950
Gene Name	SMYD2
Gene Alias	HSKM-B, KMT3C, MGC119305, ZMYND14
Gene Description	SET and MYND domain containing 2
Omim ID	610663
Gene Ontology	Hyperlink
Gene Summary	SET domain-containing proteins, such as SMYD2, catalyze lysine methylation (Brown et al., 2006 [PubMed 16805913]).[supplied by OMIM]
Other Designations	OTTHUMP00000035134 zinc finger, MYND domain containing 14

Disease

- [Celiac Disease](#)
- [Genetic Predisposition to Disease](#)