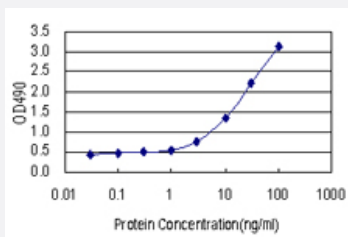


# SMYD2 (Human) Matched Antibody Pair

Catalog # H00056950-AP21

Size 1 Set

## Applications



Sandwich ELISA detection sensitivity ranging from 1 ng/ml to 100 ng/ml.

## Specification

<b>Product Description</b>	This antibody pair set comes with a matched antibody pair to detect and quantify the protein level of human SMYD2.
<b>Reactivity</b>	Human
<b>Interspecies Antigen Sequence</b>	Rat (93)
<b>Quality Control Testing</b>	Standard curve using recombinant protein ( H00056950-P01 ) as an analyte. Sandwich ELISA detection sensitivity ranging from 1 ng/ml to 100 ng/ml.
<b>Supplied Product</b>	Antibody pair set content: 1. Capture antibody: rabbit MaxPab® affinity purified polyclonal anti-SMYD2 (100 ug) 2. Detection antibody: mouse purified polyclonal anti-SMYD2 (20 ug) *Reagents are sufficient for at least 1-2 x 96 well plates using recommended protocols.
<b>Storage Instruction</b>	Store reagents of the antibody pair set at -20°C or lower. Please aliquot to avoid repeated freeze thaw cycle. Reagents should be returned to -20°C storage immediately after use.

## Applications

- [ELISA Pair \(Recombinant protein\)](#)

[Protocol Download](#)

## Gene Info — SMYD2

Entrez GeneID	<a href="#">56950</a>
Gene Name	SMYD2
Gene Alias	HSKM-B, KMT3C, MGC119305, ZMYND14
Gene Description	SET and MYND domain containing 2
Omim ID	<a href="#">610663</a>
Gene Ontology	<a href="#">Hyperlink</a>
Gene Summary	SET domain-containing proteins, such as SMYD2, catalyze lysine methylation (Brown et al., 2006 [PubMed 16805913]).[supplied by OMIM]
Other Designations	OTTHUMP00000035134 zinc finger, MYND domain containing 14

## Disease

- [Celiac Disease](#)
- [Genetic Predisposition to Disease](#)