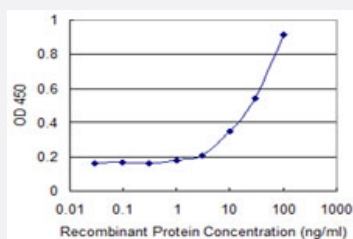


CA10 monoclonal antibody (M01), clone 1A10

Catalog # H00056934-M01

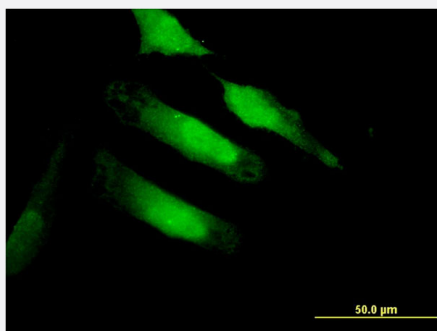
Size 100 ug

Applications



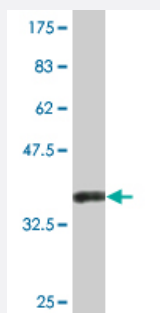
Sandwich ELISA (Recombinant protein)

Detection limit for recombinant GST tagged CA10 is 1 ng/ml as a capture antibody.



Immunofluorescence

Immunofluorescence of monoclonal antibody to CA10 on HeLa cell . [antibody concentration 10 ug/ml]



Western Blot detection against Immunogen (36.74 KDa) .

Specification

Product Description

Mouse monoclonal antibody raised against a partial recombinant CA10.

| | |
|-------------------------------|---|
| Immunogen | CA10 (NP_064563.1, 229 a.a. ~ 328 a.a) partial recombinant protein with GST tag. MW of the GST tag alone is 26 KDa. |
| Sequence | TSSFITYDGSMTIPPCYETASWIIMNKPVYITRMQMHSRLRLLSQNPQSQIFLSMSDNFRPVQPLNNR CIRTNINFSLQKDCPNNRAQKLQYRVNEWLLK |
| Host | Mouse |
| Reactivity | Human |
| Interspecies Antigen Sequence | Mouse (100) |
| Isotype | IgG2a Kappa |
| Quality Control Testing | Antibody Reactive Against Recombinant Protein. Western Blot detection against Immunogen (36.74 KDa) . |
| Storage Buffer | In 1x PBS, pH 7.4 |
| Storage Instruction | Store at -20°C or lower. Aliquot to avoid repeated freezing and thawing. |

Applications

- Western Blot (Recombinant protein)

[Protocol Download](#)

- Sandwich ELISA (Recombinant protein)

Detection limit for recombinant GST tagged CA10 is 1 ng/ml as a capture antibody.

[Protocol Download](#)

- ELISA

- Immunofluorescence

Immunofluorescence of monoclonal antibody to CA10 on HeLa cell . [antibody concentration 10 ug/ml]

Gene Info — CA10

Entrez GeneID [56934](#)

GeneBank Accession# [NM_020178](#)

| | |
|--------------------|--|
| Protein Accession# | NP_064563.1 |
| Gene Name | CA10 |
| Gene Alias | CA-RPX, CARPX, HUCEP-15 |
| Gene Description | carbonic anhydrase X |
| Omim ID | 604642 |
| Gene Ontology | Hyperlink |
| Gene Summary | <p>This gene encodes a protein that belongs to the carbonic anhydrase family of zinc metalloenzyme s, which catalyze the reversible hydration of carbon dioxide in various biological processes. The p rotein encoded by this gene is an acatalytic member of the alpha-carbonic anhydrase subgroup, a nd it is thought to play a role in the central nervous system, especially in brain development. Multipl e transcript variants encoding the same protein have been found for this gene. [provided by RefS eq</p> |
| Other Designations | carbonic anhydrase-related protein 10 carbonic anhydrase-related protein X cerebral protein-15 |

Disease

- [Celiac Disease](#)
- [Genetic Predisposition to Disease](#)
- [Obesity](#)
- [Osteoporosis](#)
- [Tobacco Use Disorder](#)