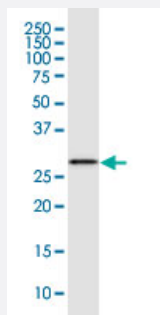


LXN monoclonal antibody (M01), clone 8H5

Catalog # H00056925-M01

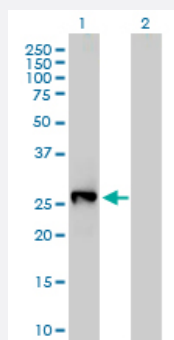
Size 100 ug

Applications



Western Blot (Cell lysate)

LXN monoclonal antibody (M01), clone 8H5. Western Blot analysis of LXN expression in MCF-7.

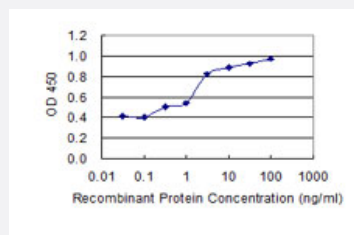


Western Blot (Transfected lysate)

Western Blot analysis of LXN expression in transfected 293T cell line by LXN monoclonal antibody (M01), clone 8H5.

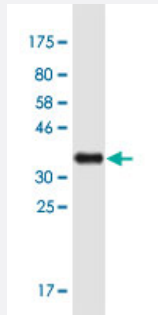
Lane 1: LXN transfected lysate (Predicted MW: 25.8 kDa).

Lane 2: Non-transfected lysate.



Sandwich ELISA (Recombinant protein)

Detection limit for recombinant GST tagged LXN is 0.1 ng/ml as a capture antibody.



Western Blot detection against Immunogen (33.66 KDa) .

Specification

Product Description	Mouse monoclonal antibody raised against a partial recombinant LXN.
Immunogen	LXN (NP_064554.2, 151 a.a. ~ 222 a.a) partial recombinant protein with GST tag. MW of the GST tag alone is 26 KDa.
Sequence	NSTEDTWYKMKVIQTVKQVQRNDDFIELDYTILLHNIASQEIPWQMQLWHPQYGTKVKHNSRLPK EVQLE
Host	Mouse
Reactivity	Human
Interspecies Antigen Sequence	Mouse (84); Rat (84)
Isotype	IgG2a Kappa
Quality Control Testing	Antibody Reactive Against Recombinant Protein. Western Blot detection against Immunogen (33.66 KDa) .
Storage Buffer	In 1x PBS, pH 7.4
Storage Instruction	Store at -20°C or lower. Aliquot to avoid repeated freezing and thawing.

Applications

- Western Blot (Cell lysate)

LXN monoclonal antibody (M01), clone 8H5. Western Blot analysis of LXN expression in MCF-7.

[Protocol Download](#)

- Western Blot (Transfected lysate)

Western Blot analysis of LXN expression in transfected 293T cell line by LXN monoclonal antibody (M01), clone 8H5.

Lane 1: LXN transfected lysate (Predicted MW: 25.8 KDa).

Lane 2: Non-transfected lysate.

[Protocol Download](#)

- Western Blot (Recombinant protein)

[Protocol Download](#)

- Sandwich ELISA (Recombinant protein)

Detection limit for recombinant GST tagged LXN is 0.1 ng/ml as a capture antibody.

[Protocol Download](#)

- ELISA

Gene Info — LXN

Entrez GeneID	56925
---------------	-----------------------

GeneBank Accession#	NM_020169
---------------------	---------------------------

Protein Accession#	NP_064554.2
--------------------	-----------------------------

Gene Name	LXN
-----------	-----

Gene Alias	ECI, TCI
------------	----------

Gene Description	latexin
------------------	---------

Omim ID	609305
---------	------------------------

Gene Ontology	Hyperlink
---------------	---------------------------

Gene Summary	This gene encodes the only known protein inhibitor of zinc-dependent metallopeptidases. [provided by RefSeq]
--------------	---

Other Designations	endogenous carboxypeptidase inhibitor
--------------------	---------------------------------------