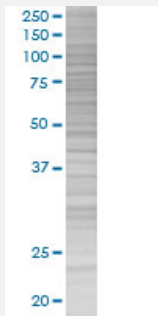


MCCC1 293T Cell Transient Overexpression Lysate(Denatured)

Catalog # H00056922-T01

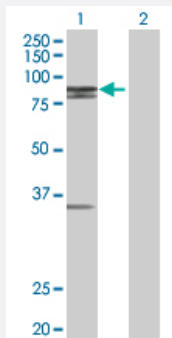
Size 100 uL

Applications



SDS-PAGE Gel

MCCC1 transfected lysate.



Western Blot

Lane 1: MCCC1 transfected lysate (79.86 KDa)

Lane 2: Non-transfected lysate.

Specification

Transfected Cell Line	293T
Plasmid	pCMV-MCCC1 full-length
Host	Human
Theoretical MW (kDa)	79.86
Interspecies Antigen Sequence	Mouse (84); Rat (84)

Quality Control Testing

Transient overexpression cell lysate was tested with Anti-MCCC1 antibody ([H00056922-B01](#)) by Western Blots.
 SDS-PAGE Gel
 MCCC1 transfected lysate.
 Western Blot
 Lane 1: MCCC1 transfected lysate (79.86 KDa)
 Lane 2: Non-transfected lysate.

Storage Buffer

1X Sample Buffer (50 mM Tris-HCl, 2% SDS, 10% glycerol, 300 mM 2-mercaptoethanol, 0.01% Bromophenol blue)

Storage Instruction

Store at -80°C. Aliquot to avoid repeated freezing and thawing.

Applications

- Western Blot

Gene Info — MCCC1

Entrez GeneID

[56922](#)

GeneBank Accession#

[NM_020166.2](#)

Protein Accession#

-

Gene Name

MCCC1

Gene Alias

DKFZp686B20267, FLJ25545, MCC-B, MCCA

Gene Description

methylcrotonoyl-Coenzyme A carboxylase 1 (alpha)

Omim ID

[210200 609010](#)

Gene Ontology

[Hyperlink](#)

Gene Summary

This gene encodes the large subunit of 3-methylcrotonyl-CoA carboxylase. This enzyme functions as a heterodimer and catalyzes the carboxylation of 3-methylcrotonyl-CoA to form 3-methylglutacoyl-CoA. Mutations in this gene are associated with 3-Methylcrotonylglycinuria, an autosomal recessive disorder of leucine catabolism. [provided by RefSeq]

Other Designations

3-methylcrotonyl-CoA carboxylase biotin-containing subunit[3-methylcrotonyl-CoA:carbon dioxide ligase subunit alpha]

Pathway

- [Metabolic pathways](#)
- [Valine](#)

Disease

- [Tobacco Use Disorder](#)