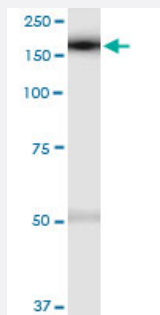


SMARCAD1 (Human) IP-WB Antibody Pair

Catalog # H00056916-PW1

Size 1 Set

Applications



Immunoprecipitation of SMARCAD1 transfected lysate using rabbit polyclonal anti-SMARCAD1 and Protein A Magnetic Bead ([U0007](#)), and immunoblotted with mouse purified polyclonal anti-SMARCAD1.

Specification

Product Description	This IP-WB antibody pair set comes with one antibody for immunoprecipitation and another to detect the precipitated protein in western blot.
Reactivity	Human
Interspecies Antigen Sequence	Mouse (91); Rat (92)
Quality Control Testing	Immunoprecipitation-Western Blot (IP-WB) Immunoprecipitation of SMARCAD1 transfected lysate using rabbit polyclonal anti-SMARCAD1 and Protein A Magnetic Bead (U0007), and immunoblotted with mouse purified polyclonal anti-SMARCA D1.
Supplied Product	Antibody pair set content: 1. Antibody pair for IP: rabbit polyclonal anti-SMARCAD1 (300 ul) 2. Antibody pair for WB: mouse purified polyclonal anti-SMARCAD1 (50 ug)
Storage Instruction	Store reagents of the antibody pair set at -20°C or lower. Please aliquot to avoid repeated freeze tha w cycle. Reagents should be returned to -20°C storage immediately after use.

Applications

- Immunoprecipitation-Western Blot

[Protocol Download](#)

Gene Info — SMARCAD1

Entrez GeneID	56916
Gene Name	SMARCAD1
Gene Alias	DKFZp762K2015, ETL1, KIAA1122
Gene Description	SWI/SNF-related, matrix-associated actin-dependent regulator of chromatin, subfamily a, containing DEAD/H box 1
Gene Ontology	Hyperlink
Gene Summary	SMARCAD1 is a member of the SNF subfamily of the helicase protein superfamily (Adra et al., 2000 [PubMed 11031099]) that binds to transcriptional start sites of many genes involved in transcriptional regulation (Okazaki et al., 2008 [PubMed 18675275]).[supplied by OMIM]
Other Designations	-