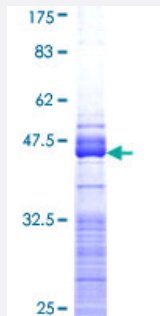


DPYSL5 (Human) Recombinant Protein (Q01)

Catalog # H00056896-Q01

Size 25 ug, 10 ug

Applications



Specification

Product Description	Human DPYSL5 partial ORF (NP_064519, 466 a.a. - 564 a.a.) recombinant protein with GST-tag at N-terminal.
Sequence	SFPDTVYKKLVQREKTLKVRGVDRTPYLGDVAVVVHPGKKEMGTPLADTPTRPVTRHGGMRDLH ESSFSLSGSQIDDHVPKRASARILAPPGGRSSGIW
Host	Wheat Germ (in vitro)
Theoretical MW (kDa)	36.63
Interspecies Antigen Sequence	Mouse (97)
Preparation Method	in vitro wheat germ expression system
Purification	Glutathione Sepharose 4 Fast Flow
Quality Control Testing	12.5% SDS-PAGE Stained with Coomassie Blue.
Storage Buffer	50 mM Tris-HCl, 10 mM reduced Glutathione, pH=8.0 in the elution buffer.
Storage Instruction	Store at -80°C. Aliquot to avoid repeated freezing and thawing.
Note	Best use within three months from the date of receipt of this protein.

Applications

- Enzyme-linked Immunoabsorbent Assay
- Western Blot (Recombinant protein)
- Antibody Production
- Protein Array

Gene Info — DPYSL5

Entrez GeneID	56896
GeneBank Accession#	NM_020134
Protein Accession#	NP_064519
Gene Name	DPYSL5
Gene Alias	CRAM, CRMP-5, CRMP5, FLJ45383, Ulip6
Gene Description	dihydropyrimidinase-like 5
Omim ID	608383
Gene Ontology	Hyperlink
Gene Summary	Members of the CRMP family, such as DPYSL5, are believed to play a role in growth cone guidance during neural development.[supplied by OMIM]
Other Designations	CRMP3-associated molecule collapsin response mediator protein-5

Pathway

- [Axon guidance](#)