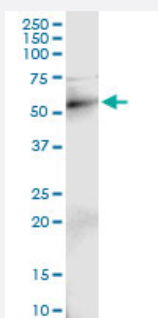


# RAD18 (Human) IP-WB Antibody Pair

Catalog # H00056852-PW1

Size 1 Set

## Applications



Immunoprecipitation of RAD18 transfected lysate using rabbit polyclonal anti-RAD18 and Protein A Magnetic Bead ([U0007](#)), and immunoblotted with mouse purified polyclonal anti-RAD18.

## Specification

<b>Product Description</b>	This IP-WB antibody pair set comes with one antibody for immunoprecipitation and another to detect the precipitated protein in western blot.
<b>Reactivity</b>	Human
<b>Interspecies Antigen Sequence</b>	Mouse (65); Rat (76)
<b>Quality Control Testing</b>	Immunoprecipitation-Western Blot (IP-WB) Immunoprecipitation of RAD18 transfected lysate using rabbit polyclonal anti-RAD18 and Protein A Magnetic Bead ( <a href="#">U0007</a> ), and immunoblotted with mouse purified polyclonal anti-RAD18.
<b>Supplied Product</b>	Antibody pair set content: 1. Antibody pair for IP: rabbit polyclonal anti-RAD18 (300 ul) 2. Antibody pair for WB: mouse purified polyclonal anti-RAD18 (50 ug)
<b>Storage Instruction</b>	Store reagents of the antibody pair set at -20°C or lower. Please aliquot to avoid repeated freeze thaw cycle. Reagents should be returned to -20°C storage immediately after use.

## Applications

- Immunoprecipitation-Western Blot

[Protocol Download](#)

## Gene Info — RAD18

**Entrez GeneID** [56852](#)

**Gene Name** RAD18

**Gene Alias** RNF73

**Gene Description** RAD18 homolog (S. cerevisiae)

**Omim ID** [605256](#)

**Gene Ontology** [Hyperlink](#)

**Gene Summary** The protein encoded by this gene is highly similar to S. cerevisiae DNA damage repair protein Rad18. Yeast Rad18 functions through its interaction with Rad6, which is an ubiquitin-conjugating enzyme required for post-replication repair of damaged DNA. Similar to its yeast counterpart, this protein is able to interact with the human homolog of yeast Rad6 protein through a conserved ring-finger motif. Mutation of this motif results in defective replication of UV-damaged DNA and hyper sensitivity to multiple mutagens. [provided by RefSeq]

**Other Designations** RAD18, S. cerevisiae, homolog|postreplication repair protein hRAD18p

## Disease

- [Adenocarcinoma](#)
- [Breast Neoplasms](#)
- [Carcinoma](#)
- [Colorectal Neoplasms](#)
- [Esophageal Neoplasms](#)
- [Genetic Predisposition to Disease](#)
- [Kidney Failure](#)
- [Lung Neoplasms](#)
- [Neoplasms](#)