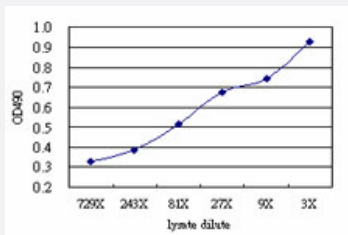


# RAD18 (Human) Matched Antibody Pair

Catalog # H00056852-AP51

Size 1 Set

## Applications



Sandwich ELISA detection sensitivity ranging from approximately 81x to 3x dilution of the RAD18 293T overexpression lysate (non-denatured).

## Specification

|                                      |  |
|--------------------------------------|--|
| <b>Product Description</b>           | This antibody pair set comes with a matched antibody pair to detect and quantify the protein level of human RAD18.   |
| <b>Reactivity</b>                    | Human  |
| <b>Interspecies Antigen Sequence</b> | Mouse (65); Rat (76)   |
| <b>Quality Control Testing</b>       | Standard curve using RAD18 293T overexpression lysate (non-denatured) as an analyte. Sandwich ELISA detection sensitivity ranging from approximately 81x to 3x dilution of the RAD18 293T overexpression lysate (non-denatured).                           |
| <b>Supplied Product</b>              | Antibody pair set content:<br>1. Capture antibody: mouse monoclonal anti-RAD18 (100 ug)<br>2. Detection antibody: rabbit purified polyclonal anti-RAD18 (50 ug)<br>*Reagents are sufficient for at least 3-5 x 96 well plates using recommended protocols. |
| <b>Storage Instruction</b>           | Store reagents of the antibody pair set at -20°C or lower. Please aliquot to avoid repeated freeze thaw cycle. Reagents should be returned to -20°C storage immediately after use.   |

## Applications

- ELISA Pair (Transfected lysate)

[Protocol Download](#)

## Gene Info — RAD18

Entrez GeneID [56852](#)

Gene Name RAD18

Gene Alias RNF73

Gene Description RAD18 homolog (S. cerevisiae)

Omim ID [605256](#)

Gene Ontology [Hyperlink](#)

**Gene Summary** The protein encoded by this gene is highly similar to S. cerevisiae DNA damage repair protein Rad18. Yeast Rad18 functions through its interaction with Rad6, which is an ubiquitin-conjugating enzyme required for post-replication repair of damaged DNA. Similar to its yeast counterpart, this protein is able to interact with the human homolog of yeast Rad6 protein through a conserved ring-finger motif. Mutation of this motif results in defective replication of UV-damaged DNA and hypersensitivity to multiple mutagens. [provided by RefSeq]

**Other Designations** RAD18, S. cerevisiae, homolog|postreplication repair protein hRAD18p

## Disease

- [Adenocarcinoma](#)
- [Breast Neoplasms](#)
- [Carcinoma](#)
- [Colorectal Neoplasms](#)
- [Esophageal Neoplasms](#)
- [Genetic Predisposition to Disease](#)
- [Kidney Failure](#)
- [Lung Neoplasms](#)
- [Neoplasms](#)