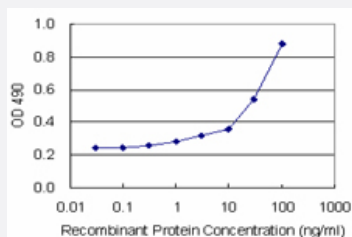


# SPHK2 (Human) Matched Antibody Pair

Catalog # H00056848-AP21

Size 1 Set

## Applications



Sandwich ELISA detection sensitivity ranging from 1 ng/ml to 100 ng/ml.

## Specification

<b>Product Description</b>	This antibody pair set comes with a matched antibody pair to detect and quantify the protein level of human SPHK2.
<b>Reactivity</b>	Human
<b>Interspecies Antigen Sequence</b>	Mouse (83); Rat (84)
<b>Quality Control Testing</b>	Standard curve using recombinant protein ( H00056848-P01 ) as an analyte. Sandwich ELISA detection sensitivity ranging from 1 ng/ml to 100 ng/ml.
<b>Supplied Product</b>	Antibody pair set content: 1. Capture antibody: rabbit MaxPab® affinity purified polyclonal anti-SPHK2 (100 ug) 2. Detection antibody: mouse purified polyclonal anti-SPHK2 (20 ug) *Reagents are sufficient for at least 1-2 x 96 well plates using recommended protocols.
<b>Storage Instruction</b>	Store reagents of the antibody pair set at -20°C or lower. Please aliquot to avoid repeated freeze thaw cycle. Reagents should be returned to -20°C storage immediately after use.

## Applications

- ELISA Pair (Recombinant protein)

[Protocol Download](#)

## Gene Info — SPHK2

Entrez GeneID	<a href="#">56848</a>
Gene Name	SPHK2
Gene Alias	-
Gene Description	sphingosine kinase 2
Omim ID	<a href="#">607092</a>
Gene Ontology	<a href="#">Hyperlink</a>
Other Designations	sphingosine kinase type 2 isoform

## Pathway

- [Calcium signaling pathway](#)
- [Fc gamma R-mediated phagocytosis](#)
- [Metabolic pathways](#)
- [Sphingolipid metabolism](#)
- [VEGF signaling pathway](#)