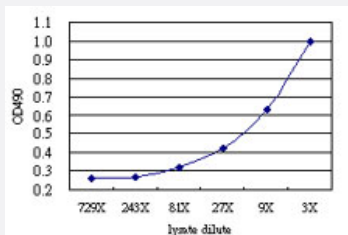


# IFNK (Human) Matched Antibody Pair

Catalog # H00056832-AP51

Size 1 Set

## Applications



Sandwich ELISA detection sensitivity ranging from approximately 27x to 3x dilution of the IFNK 293T overexpression lysate (non-denatured).

## Specification

<b>Product Description</b>	This antibody pair set comes with a matched antibody pair to detect and quantify the protein level of human IFNK.
<b>Reactivity</b>	Human
<b>Interspecies Antigen Sequence</b>	Mouse (35); Rat (38)
<b>Quality Control Testing</b>	Standard curve using IFNK 293T overexpression lysate (non-denatured) as an analyte. Sandwich ELISA detection sensitivity ranging from approximately 27x to 3x dilution of the IFNK 293T overexpression lysate (non-denatured).
<b>Supplied Product</b>	Antibody pair set content: 1. Capture antibody: mouse monoclonal anti-IFNK (100 ug) 2. Detection antibody: rabbit purified polyclonal anti-IFNK (50 ug) *Reagents are sufficient for at least 3-5 x 96 well plates using recommended protocols.
<b>Storage Instruction</b>	Store reagents of the antibody pair set at -20°C or lower. Please aliquot to avoid repeated freeze thaw cycle. Reagents should be returned to -20°C storage immediately after use.

## Applications

- [ELISA Pair \(Transfected lysate\)](#)

[Protocol Download](#)

## Gene Info — IFNK

**Entrez GeneID** [56832](#)

**Gene Name** IFNK

**Gene Alias** RP11-27J8.1

**Gene Description** interferon, kappa

**Gene Ontology** [Hyperlink](#)

**Gene Summary** This gene encodes a member of the type I interferon family. Type I interferons are a group of related glycoproteins that play an important role in host defenses against viral infections. This protein is expressed in keratinocytes and the gene is found on chromosome 9, adjacent to the type I interferon cluster. [provided by RefSeq]

**Other Designations** OTTHUMP00000021169|interferon kappa|interferon-like protein

## Pathway

- [Cytokine-cytokine receptor interaction](#)
- [Jak-STAT signaling pathway](#)

## Disease

- [Arthritis](#)
- [Cleft Lip](#)
- [Cleft Palate](#)
- [Genetic Predisposition to Disease](#)
- [Lupus Erythematosus](#)