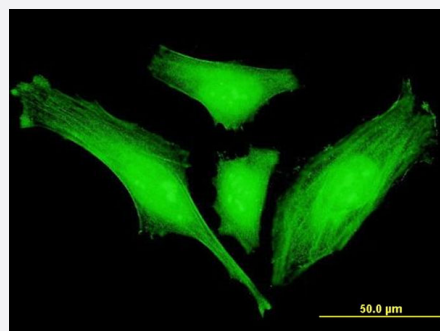


SLC2A4RG monoclonal antibody (M01), clone 5D2

Catalog # H00056731-M01

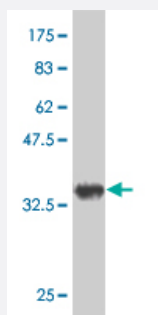
Size 100 ug

Applications



Immunofluorescence

Immunofluorescence of monoclonal antibody to SLC2A4RG on HeLa cell .
[antibody concentration 10 ug/ml]



Western Blot detection against Immunogen (35.86 KDa) .

Specification

Product Description	Mouse monoclonal antibody raised against a partial recombinant SLC2A4RG.
Immunogen	SLC2A4RG (NP_064446, 178 a.a. ~ 269 a.a) partial recombinant protein with GST tag. MW of the GST tag alone is 26 KDa.
Sequence	EAAHFLFGPETLRKRKSPAQVMFQCLWKSCGKVLSTASAMQRHRLVHLGRQAEPEQSDGEED FYYTELDVGVDLTLDGLSSSLTPVSPTASM
Host	Mouse
Reactivity	Human
Isotype	IgG2a Kappa

Quality Control Testing

Antibody Reactive Against Recombinant Protein.
Western Blot detection against Immunogen (35.86 KDa) .

Storage Buffer

In 1x PBS, pH 7.4

Storage Instruction

Store at -20°C or lower. Aliquot to avoid repeated freezing and thawing.

Applications

- Western Blot (Recombinant protein)

[Protocol Download](#)

- ELISA

- Immunofluorescence

Immunofluorescence of monoclonal antibody to SLC2A4RG on HeLa cell . [antibody concentration 10 ug/ml]

Gene Info — SLC2A4RG

Entrez GeneID

[56731](#)

GeneBank Accession#

[NM_020062](#)

Protein Accession#

[NP_064446](#)

Gene Name

SLC2A4RG

Gene Alias

GEF, HDBP1, Si-1-2, Si-1-2-19

Gene Description

SLC2A4 regulator

Omim ID

[609493](#)

Gene Ontology

[Hyperlink](#)

Gene Summary

The protein encoded by this gene is a nuclear transcription factor involved in the activation of the solute carrier family 2 member 4 gene. The encoded protein interacts with another transcription factor, myocyte enhancer factor 2, to activate transcription of this gene. [provided by RefSeq]

Other Designations

GLUT4 enhancer factor|Huntington's disease gene regulatory region-binding protein 1|OTTHUMP00000031591

Disease

- [Insulin Resistance](#)
- [Polycystic Ovary Syndrome](#)