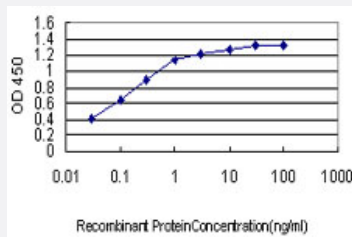


JPH1 monoclonal antibody (M04), clone 2E6

Catalog # H00056704-M04

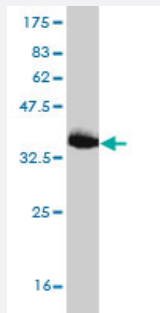
Size 100 ug

Applications



Sandwich ELISA (Recombinant protein)

Detection limit for recombinant GST tagged JPH1 is approximately 0.03ng/ml as a capture antibody.



Western Blot detection against Immunogen (34.43 KDa) .

Specification

Product Description

Mouse monoclonal antibody raised against a partial recombinant JPH1.

Immunogen

JPH1 (NP_065698, 501 a.a. ~ 579 a.a) partial recombinant protein with GST tag. MW of the GST tag alone is 26 KDa.

Sequence

VADEQVTAMNKPLMSKAPTKEAGAVVPQSKYSGRHHIPNPSNGELHSQYHGYVVKLNAPQHPPV
DVEDGDGSSQSSSA

Host

Mouse

Reactivity

Human

Interspecies Antigen Sequence	Mouse (79); Rat (79)
Isotype	IgG2a Kappa
Quality Control Testing	Antibody Reactive Against Recombinant Protein. Western Blot detection against Immunogen (34.43 KDa) .
Storage Buffer	In 1x PBS, pH 7.4
Storage Instruction	Store at -20°C or lower. Aliquot to avoid repeated freezing and thawing.

Applications

- Western Blot (Recombinant protein)

[Protocol Download](#)

- Sandwich ELISA (Recombinant protein)

Detection limit for recombinant GST tagged JPH1 is approximately 0.03ng/ml as a capture antibody.

[Protocol Download](#)

- ELISA

Gene Info — JPH1

Entrez GeneID	56704
GeneBank Accession#	NM_020647
Protein Accession#	NP_065698
Gene Name	JPH1
Gene Alias	DKFZp762L0313, JP-1, JP1
Gene Description	junctophilin 1
Omim ID	605266
Gene Ontology	Hyperlink

Gene Summary

Junctional complexes between the plasma membrane and endoplasmic/sarcoplasmic reticulum are a common feature of all excitable cell types and mediate cross talk between cell surface and intracellular ion channels. The protein encoded by this gene is a component of junctional complexes and is composed of a C-terminal hydrophobic segment spanning the endoplasmic/sarcoplasmic reticulum membrane and a remaining cytoplasmic domain that shows specific affinity for the plasma membrane. This gene is a member of the junctophilin gene family. [provided by RefSeq]

Other Designations

junctophilin type1|mitsugumin72

Disease

- [Tobacco Use Disorder](#)