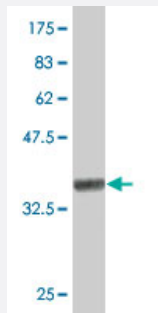


JPH1 polyclonal antibody (A01)

Catalog # H00056704-A01

Size 50 uL

Applications



Western Blot detection against Immunogen (34.8 KDa) .

Specification

Product Description	Mouse polyclonal antibody raised against a partial recombinant JPH1.
Immunogen	JPH1 (NP_065698, 501 a.a. ~ 579 a.a) partial recombinant protein with GST tag.
Sequence	VADEQVTAMNKPLMSKAPTKEAGAVVPQSKYSGRHHIPNPSNGELHSQYHGYYVKLNAPQHPPV DVEDGDGSSQSSSA
Host	Mouse
Reactivity	Human
Interspecies Antigen Sequence	Mouse (79); Rat (79)
Quality Control Testing	Antibody Reactive Against Recombinant Protein. Western Blot detection against Immunogen (34.8 KDa) .
Storage Buffer	50 % glycerol
Storage Instruction	Store at -20°C or lower. Aliquot to avoid repeated freezing and thawing.

Applications

- Western Blot (Recombinant protein)

[Protocol Download](#)

- ELISA

Gene Info — JPH1

Entrez GeneID [56704](#)

GeneBank Accession# [NM_020647](#)

Protein Accession# [NP_065698](#)

Gene Name JPH1

Gene Alias DKFZp762L0313, JP-1, JP1

Gene Description junctophilin 1

Omim ID [605266](#)

Gene Ontology [Hyperlink](#)

Gene Summary Junctional complexes between the plasma membrane and endoplasmic/sarcoplasmic reticulum are a common feature of all excitable cell types and mediate cross talk between cell surface and intracellular ion channels. The protein encoded by this gene is a component of junctional complexes and is composed of a C-terminal hydrophobic segment spanning the endoplasmic/sarcoplasmic reticulum membrane and a remaining cytoplasmic domain that shows specific affinity for the plasma membrane. This gene is a member of the junctophilin gene family. [provided by RefSeq]

Other Designations junctophilin type1|mitsugumin72

Publication Reference

- [Altered expression and splicing of Ca\(2+\) metabolism genes in myotonic dystrophies DM1 and DM2.](#)

Vihola A, Sirito M, Bachinski LL, Raheem O, Screen M, Suominen T, Krahe R, Udd B.

Neuropathology and Applied Neurobiology 2013 Jun; 39(4):390.

Application: WB, Human, Muscle

Disease

- [Tobacco Use Disorder](#)