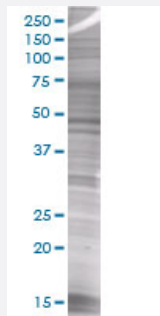


BCCIP 293T Cell Transient Overexpression Lysate(Denatured)

Catalog # H00056647-T01

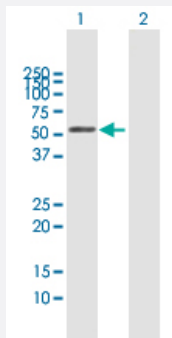
Size 100 uL

Applications



SDS-PAGE Gel

BCCIP transfected lysate.



Western Blot

Lane 1: BCCIP transfected lysate (34.54 KDa)

Lane 2: Non-transfected lysate.

Specification

Transfected Cell Line	293T
Plasmid	pCMV-BCCIP full-length
Host	Human
Theoretical MW (kDa)	34.65
Interspecies Antigen Sequence	Mouse (75); Rat (77)

Quality Control Testing

Transient overexpression cell lysate was tested with Anti-BCCIP antibody ([H00056647-B01](#)) by Western Blots.
 SDS-PAGE Gel
 BCCIP transfected lysate.
 Western Blot
 Lane 1: BCCIP transfected lysate (34.54 KDa)
 Lane 2: Non-transfected lysate.

Storage Buffer

1X Sample Buffer (50 mM Tris-HCl, 2% SDS, 10% glycerol, 300 mM 2-mercaptoethanol, 0.01% Bromophenol blue)

Storage Instruction

Store at -80°C. Aliquot to avoid repeated freezing and thawing.

Applications

- Western Blot

Gene Info — BCCIP

Entrez GeneID

[56647](#)

GeneBank Accession#

[BC009771](#)

Protein Accession#

[AAH09771](#)

Gene Name

BCCIP

Gene Alias

TOK-1, TOK1

Gene Description

BRCA2 and CDKN1A interacting protein

Gene Ontology

[Hyperlink](#)

Gene Summary

This gene product was isolated on the basis of its interaction with BRCA2 and p21 proteins. It is an evolutionarily conserved nuclear protein with multiple interacting domains. The N-terminal half shares moderate homology with regions of calmodulin and M-calpain, suggesting that it may also bind calcium. Functional studies indicate that this protein may be an important cofactor for BRCA2 in tumor suppression, and a modulator of CDK2 kinase activity via p21. This protein has also been implicated in the regulation of BRCA2 and RAD51 nuclear focus formation, double-strand break-induced homologous recombination, and cell cycle progression. Multiple transcript variants encoding different isoforms have been described for this gene. [provided by RefSeq]

Other Designations

BCCIPalpha|BCCIPbeta|BRCA2 and CDKN1A-interacting protein|BRCA2 and Cip1/p21 interacting protein|OTTHUMP00000020714|OTTHUMP00000020715|OTTHUMP00000020716|TOK-1alpha|TOK-1beta|cdk inhibitor p21 binding protein|p21- and CDK-associated protein 1

Disease

- [Breast cancer](#)
- [Breast Neoplasms](#)
- [Carcinoma](#)
- [Coronary Artery Disease](#)
- [Genetic Predisposition to Disease](#)
- [Melanoma](#)
- [Prostatic Neoplasms](#)
- [Skin Neoplasms](#)