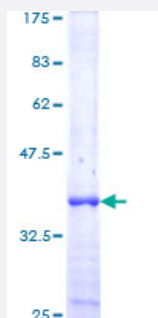


BCCIP (Human) Recombinant Protein (Q01)

Catalog # H00056647-Q01

Size 25 ug, 10 ug

Applications



Specification

Product Description	Human BCCIP partial ORF (AAH09771, 210 a.a. - 314 a.a.) recombinant protein with GST-tag at N-terminal.
Sequence	NKPCGKCYFYLLISKTFVEAEKNNSKKKPSNKKKAALMFANAEFFYEKAILKFNYSVQEESDTC LGKWSFDDVPMTPRLRTVMLIPGDKMNEIMDKLKEYLSV
Host	Wheat Germ (in vitro)
Theoretical MW (kDa)	36.96
Interspecies Antigen Sequence	Mouse (75); Rat (77)
Preparation Method	in vitro wheat germ expression system
Purification	Glutathione Sepharose 4 Fast Flow
Quality Control Testing	12.5% SDS-PAGE Stained with Coomassie Blue.
Storage Buffer	50 mM Tris-HCl, 10 mM reduced Glutathione, pH=8.0 in the elution buffer.
Storage Instruction	Store at -80°C. Aliquot to avoid repeated freezing and thawing.
Note	Best use within three months from the date of receipt of this protein.

Applications

- Enzyme-linked Immunoabsorbent Assay
- Western Blot (Recombinant protein)
- Antibody Production
- Protein Array

Gene Info — BCCIP

Entrez GeneID [56647](#)

GeneBank Accession# [BC009771](#)

Protein Accession# [AAH09771](#)

Gene Name BCCIP

Gene Alias TOK-1, TOK1

Gene Description BRCA2 and CDKN1A interacting protein

Gene Ontology [Hyperlink](#)

Gene Summary This gene product was isolated on the basis of its interaction with BRCA2 and p21 proteins. It is a n evolutionarily conserved nuclear protein with multiple interacting domains. The N-terminal half sh ares moderate homology with regions of calmodulin and M-calpain, suggesting that it may also bi nd calcium. Functional studies indicate that this protein may be an important cofactor for BRCA2 i n tumor suppression, and a modulator of CDK2 kinase activity via p21. This protein has also bee n implicated in the regulation of BRCA2 and RAD51 nuclear focus formation, double-strand break -induced homologous recombination, and cell cycle progression. Multiple transcript variants enco ding different isoforms have been described for this gene. [provided by RefSeq

Other Designations BCCIPalpha|BCCIPbeta|BRCA2 and CDKN1A-interacting protein|BRCA2 and Cip1/p21 interact ing protein|OTTHUMP00000020714|OTTHUMP00000020715|OTTHUMP00000020716|TOK-1a| pha|TOK-1beta|cdk inhibitor p21 binding protein|p21- and CDK-associated protein 1

Disease

- [Breast cancer](#)
- [Breast Neoplasms](#)

- [Carcinoma](#)
- [Coronary Artery Disease](#)
- [Genetic Predisposition to Disease](#)
- [Melanoma](#)
- [Prostatic Neoplasms](#)
- [Skin Neoplasms](#)